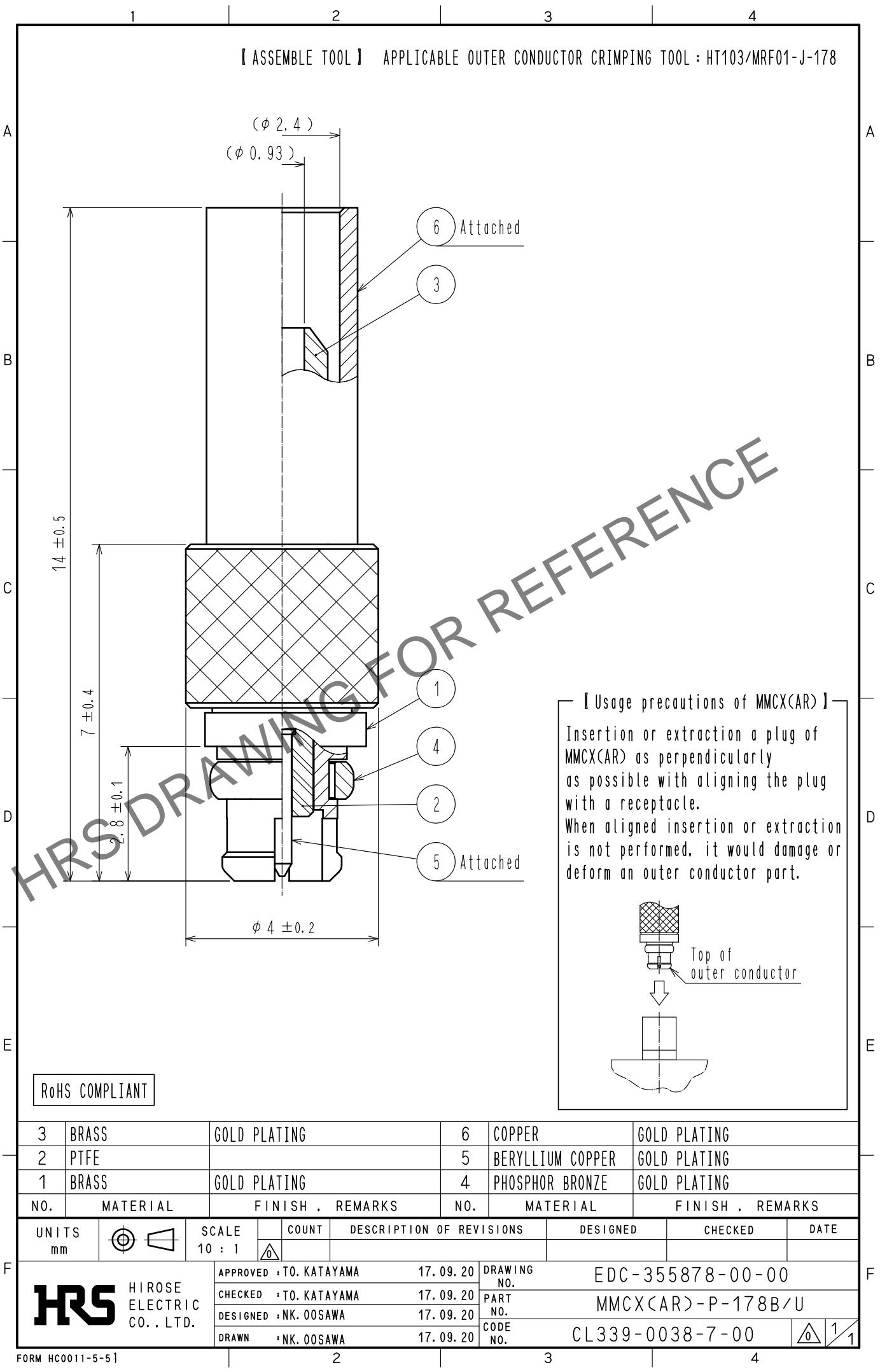


Aug.1.2024 Copyright 2024 HIROSE ELECTRIC CO., LTD. All Rights Reserved.
In case of consideration for using Automotive equipment / device which demand high reliability, kindly contact our sales window correspondents.



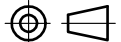



【 Usage precautions of MMCX(AR) 】

Insertion or extraction a plug of MMCX(AR) as perpendicularly as possible with aligning the plug with a receptacle.

When aligned insertion or extraction is not performed, it would damage or deform an outer conductor part.

Top of outer conductor

RoHS COMPLIANT

3	BRASS	GOLD PLATING		6	COPPER	GOLD PLATING		
2	PTFE			5	BERYLLIUM COPPER	GOLD PLATING		
1	BRASS	GOLD PLATING		4	PHOSPHOR BRONZE	GOLD PLATING		
NO.	MATERIAL	FINISH . REMARKS		NO.	MATERIAL	FINISH . REMARKS		
UNITS mm		SCALE 10 : 1		COUNT	DESCRIPTION OF REVISIONS	DESIGNED	CHECKED	DATE
 HIROSE ELECTRIC CO., LTD.			APPROVED		↑TO. KATAYAMA	17. 09. 20	DRAWING NO. EDC-355878-00-00	
			CHECKED		↑TO. KATAYAMA	17. 09. 20	PART NO. MMCX<AR>-P-178B/U	
			DESIGNED		↑NK. OOSAWA	17. 09. 20	CODE NO. CL339-0038-7-00	
			DRAWN		↑NK. OOSAWA	17. 09. 20	 1/1	