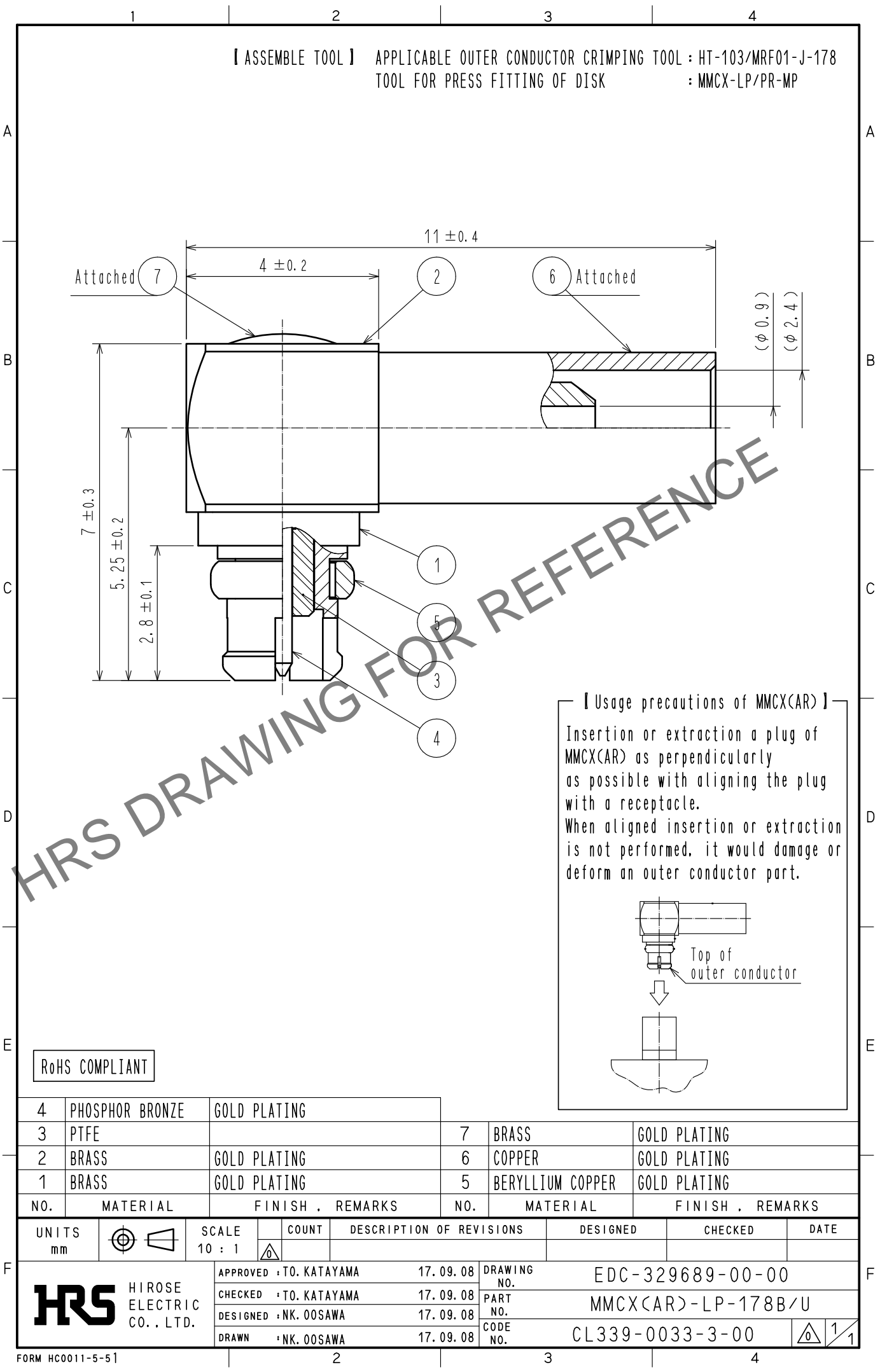
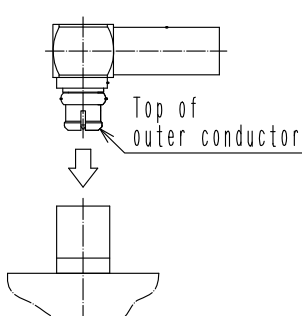


Aug.1.2024 Copyright 2024 HIROSE ELECTRIC CO., LTD. All Rights Reserved.
In case of consideration for using Automotive equipment / device which demand high reliability, kindly contact our sales window correspondents.



【 Usage precautions of MMCX(AR) 】
Insertion or extraction a plug of MMCX(AR) as perpendicularly as possible with aligning the plug with a receptacle.
When aligned insertion or extraction is not performed, it would damage or deform an outer conductor part.



RoHS COMPLIANT

4	PHOSPHOR BRONZE	GOLD PLATING							
3	PTFE			7	BRASS	GOLD PLATING			
2	BRASS	GOLD PLATING		6	COPPER	GOLD PLATING			
1	BRASS	GOLD PLATING		5	BERYLLIUM COPPER	GOLD PLATING			
NO.	MATERIAL	FINISH .	REMARKS	NO.	MATERIAL	FINISH .	REMARKS		
UNITS mm		SCALE 10 : 1	COUNT 	DESCRIPTION OF REVISIONS			DESIGNED	CHECKED	DATE
HIROSE ELECTRIC CO., LTD.		APPROVED	・TO. KATAYAMA	17. 09. 08	DRAWING NO.	EDC-329689-00-00			
		CHECKED	・TO. KATAYAMA	17. 09. 08	PART NO.	MMCX(AR)-LP-178B/U			
		DESIGNED	・NK. OOSAWA	17. 09. 08	CODE NO.	CL339-0033-3-00			
		DRAWN	・NK. OOSAWA	17. 09. 08					