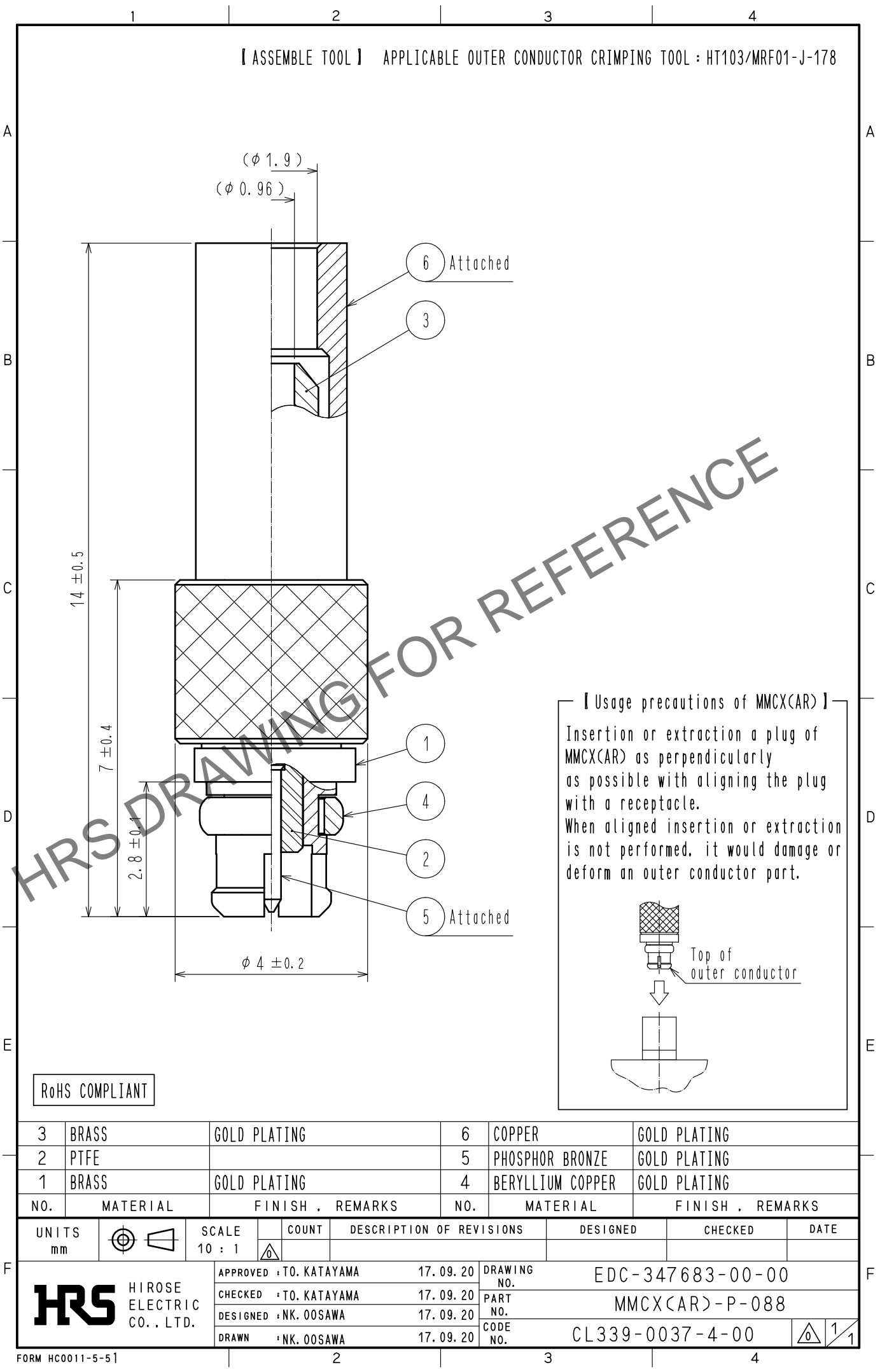
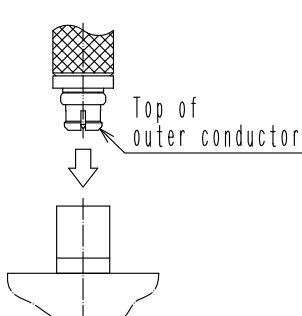


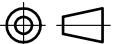


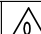
Aug.1.2024 Copyright 2024 HIROSE ELECTRIC CO., LTD. All Rights Reserved.  
In case of consideration for using Automotive equipment / device which demand high reliability, kindly contact our sales window correspondents.



【 Usage precautions of MMCX(AR) 】  
Insertion or extraction a plug of MMCX(AR) as perpendicularly as possible with aligning the plug with a receptacle.  
When aligned insertion or extraction is not performed, it would damage or deform an outer conductor part.



RoHS COMPLIANT

3	BRASS	GOLD PLATING		6	COPPER	GOLD PLATING			
2	PTFE			5	PHOSPHOR BRONZE	GOLD PLATING			
1	BRASS	GOLD PLATING		4	BERYLLIUM COPPER	GOLD PLATING			
NO.	MATERIAL	FINISH . REMARKS		NO.	MATERIAL	FINISH . REMARKS			
UNITS mm		SCALE 10 : 1		COUNT	DESCRIPTION OF REVISIONS		DESIGNED	CHECKED	DATE
 HIROSE ELECTRIC CO., LTD.			APPROVED		・TO. KATAYAMA	17. 09. 20	DRAWING NO. EDC-347683-00-00		
			CHECKED		・TO. KATAYAMA	17. 09. 20	PART NO. MMCX<AR>-P-088		
			DESIGNED		・NK. OOSAWA	17. 09. 20	CODE NO. CL339-0037-4-00		
			DRAWN		・NK. OOSAWA	17. 09. 20	 1/1		