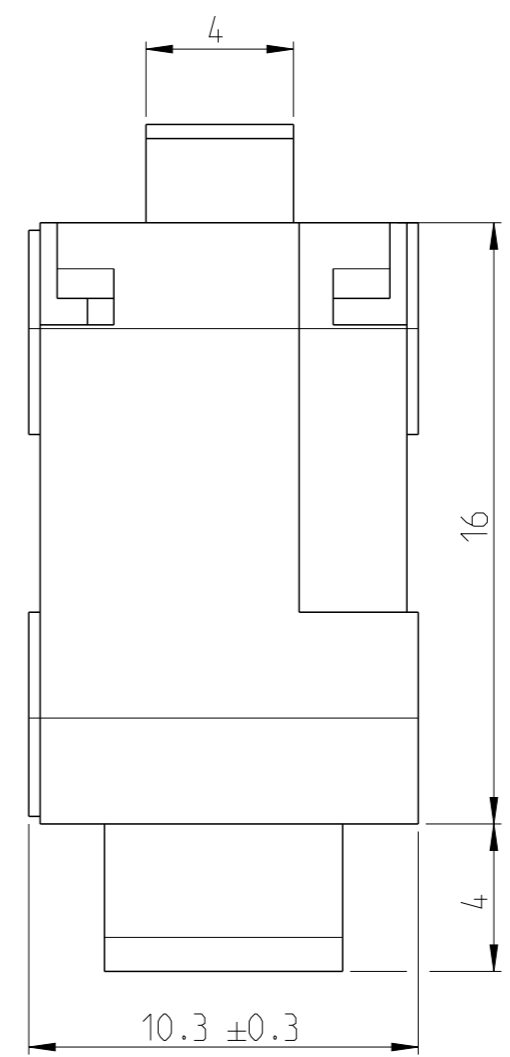
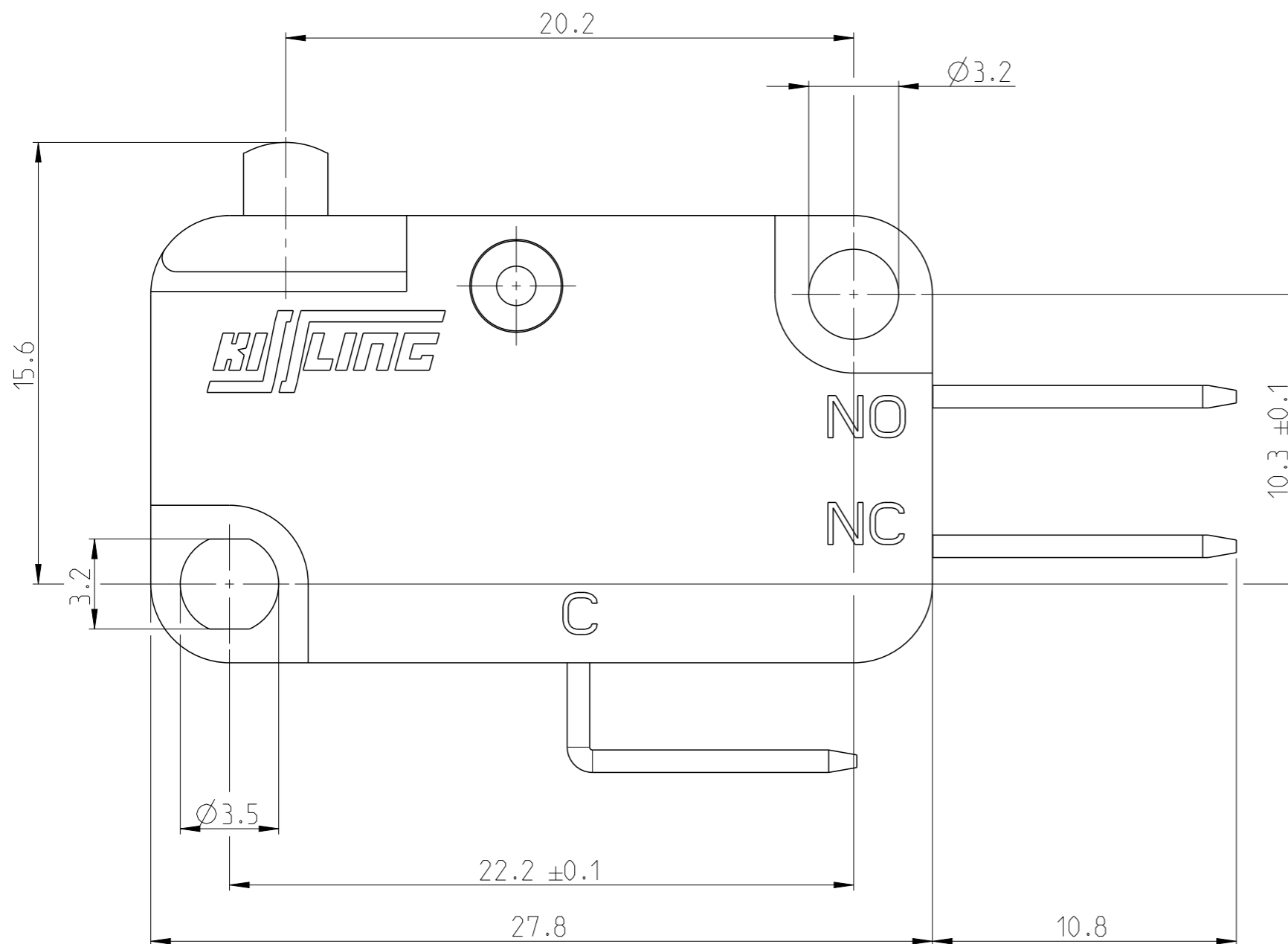
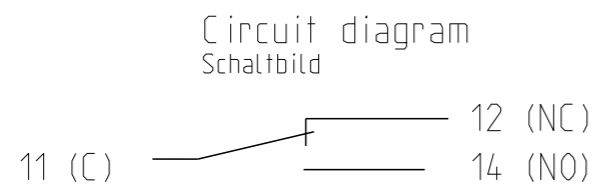
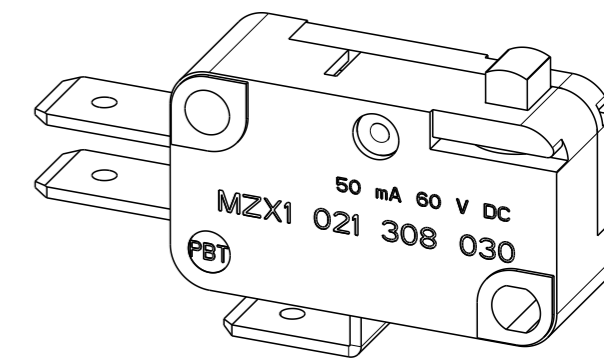


P	LTR	DESCRIPTION	DATE	DWN	APVD
	A	TE STANDARD	20AUG2024	KS	RB



NOTES
Bemerkungen

1 TE-CONNECTIVITY ORDER-NUMBER
TE-Connectivity Bestellnummer



K1013277	1	A	MICRO SWITCH Mikroschalter	7	1
TE ORDER-NO.	REV.		DESCRIPTION	WEIGHT [g]	ITEM NO

THIS DRAWING IS A CONTROLLED DOCUMENT.

DIMENSIONS: mm	TOLERANCES UNLESS OTHERWISE SPECIFIED: DIN ISO 2768 cl
	0 PLC ±
	1 PLC ±
	2 PLC ±
	3 PLC ±
	4 PLC ±
	ANGLES ±
MATERIAL	FINISH

DWN Manoj C A 19AUG2024	TE Connectivity	
CHK K.Seeger 19AUG2024	TE Connectivity	
APVD U.Grindemann 19AUG2024	TE Connectivity	
PRODUCT SPEC	NAME MICRO SWITCH Mikroschalter	
APPLICATION SPEC	RESTRICTED TO	
WEIGHT	SIZE A3	CAGE CODE 00779
CUSTOMER DRAWING	DRAWING NO MZX1-021-308-030	SCALE 5:1
	SHEET 1 OF 2	REV A

REVISIONS

P	LTR	DESCRIPTION	DATE	DWN	APVD
	-	SEE SHEET 1	-	-	-

CONSTRUCTION

HOUSING MATERIALTHERMOPLAST GF
COVER MATERIALTHERMOPLAST GF
CONNECTIONLIT CONNECTION
PROTECTION INTERIORIP 40 IEC 60 529
CONNECTIONSIP 00 IEC 60 529

Aufbau

GehaeusewerkstoffThermoplast GF
DeckelwerkstoffThermoplast GF
AnschlussLoetanschluss
Schutzart InnenraumIP 40 IEC 60 529
AnschuesseIP 00 IEC 60 529

MECHANICAL DATA

PRE-TRAVEL.....0.5 TO 1.1 mm
OVERTRAVEL>1mm
MOVEMENT DIFFERENTIAL.....0.05 TO 0.3mm
OPERATING FORCE1.5 TO 3 N
RELEASE FORCE>1 N
MAX. OPERATING FORCE.....<10 N
CURRENT CARRYING PARTSCu ALLOY
CONTACT MATERIALAg GAL.Au
LIFE CYCLE MECHANICAL30 MILLION
FREQUENCY200 PER MINUTE
OPERATING SPEED IN DIRECTION OF PLUNGER.....MAX. 0.5m/s
AMBIENT TEMPERATURE-40°C TO +85°C

Mechanische Daten

Vorlauf0.5 bis 1.1 mm
Nachlauf>1 mm
Differenzweg0.05 bis 0.3 mm
Schaltkraft1.5 bis 3 N
Rueckschaltkraft.....>1 N
Betaetigungskraft max.<10 N
Stromfuehrende TeileCu-legierung
KontaktwerkstoffAg gal.Au
Lebensdauer mechanisch30 Mio.
Schalthaeufigkeit200 pro minute
Betaetigungsgeschwindigkeit in StoesselrichtungMAX. 0,5 m/s
Umgebungstemperatur-40°C bis +85°C

ELECTRICAL DATA


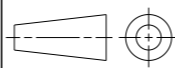
MAX. RATINGS.....60 VDC 50 mA
.....24 VDC 100 mA
.....12 VDC 250 mA
.....6 VDC 250 mA
MIN. RATINGS5 VDC 2 mA

Elektrische daten

Schalteleistung max.....60 VDC 50 mA
.....24 VDC 100 mA
.....12 VDC 250 mA
.....6 VDC 250 mA
Schalteleistung min.....5 VDC 2 mA

LARGER LOADS WILL DAMAGE GOLD PLATING

Das Schalten groesserer Leistungen fuehrt zur Zerstoerung der Goldschicht.

THIS DRAWING IS A CONTROLLED DOCUMENT.		DWN Manoj C A 19AUG2024	 TE Connectivity		
DIMENSIONS: mm		CHK K.Seeger 19AUG2024			
TOLERANCES UNLESS OTHERWISE SPECIFIED: DIN ISO 2768 cl		APVD U.Grindemann 19AUG2024	NAME MICRO SWITCH Mikroschalter		
		PRODUCT SPEC	RESTRICTED TO		
MATERIAL		APPLICATION SPEC	SIZE A3	CAGE CODE 00779	DRAWING NO G=MZX1-021-308-030
FINISH		WEIGHT	SCALE 5:1		
		CUSTOMER DRAWING	SHEET 2 OF 2		
			REV A		