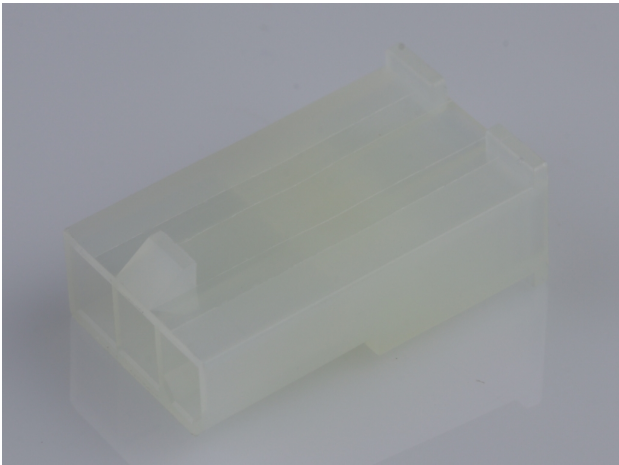




**Part Number :** [39014036](#)  
**Product Description :** Mini-Fit Jr. Plug Housing,  
Single Row, 3 Circuits, UL 94V-2, without Panel  
Mounting Ears, Natural  
**Series Number :** 5559  
**Status :** Active  
**Product Category :** Connector Housings  
**Engineering Number :** 5559-03P3



Documents & Resources

Drawings

[039014036\\_sd.pdf](#)

3D Models and Design Files


[039014036\\_stp.zip](#)

Specifications

- [55560001-AS-000.pdf](#)
- [55560002-AS-000.pdf](#)
- [AS-5557-001-001.pdf](#)
- [PK-5559-003-001.pdf](#)
- [PS-45750-001-001.pdf](#)
- [PS-5556-001-001.pdf](#)
- [55560010-TS-000.pdf](#)
- [TS-5556-002-001.pdf](#)

Product Environment Compliance

Compliance

GADSL/IMDS	Compliant with Exemption 44; 34
China RoHS	
EU ELV	Not Relevant
Low-Halogen Status	Low-Halogen per IEC 61249-2-21
REACH SVHC	Not Contained per D(2024)7663-DC (21 Jan 2025)
EU RoHS	Compliant per EU 2015/863

## Multiple Part Product Compliance Statements

- Eu RoHS
- REACH SVHC
- Low-Halogen

## Multiple Part Industry Compliance Documents

- IPC 1752A Class C
- IPC 1752A Class D
- Molex Product Compliance Declaration
- IEC-62474
- chemSHERPA (xml)

## EU RoHS Certificate of Compliance

---

### Part Details

#### General

Status	Active
Category	Connector Housings
Series	5559
Description	Mini-Fit Jr. Plug Housing, Single Row, 3 Circuits, UL 94V-2, without Panel Mounting Ears, Natural
Application	Power, Wire-to-Board, Wire-to-Wire
Comments	Current = 13A max. per circuit when header is mated to a receptacle loaded with 45750 series terminals crimped to 16 AWG wire. See Molex product specification PS-45750-001 for additional current derating information.
Product Name	Mini-Fit Jr.
UPC	800754381109

#### Agency

CSA	LR19980
UL	E29179

#### Physical

Breakaway	No
Circuits (maximum)	3
Color - Resin	Natural

Flammability	94V-2
Gender	Plug
Glow-Wire Capable	No
Keying to Mating Part	None
Lock to Mating Part	Yes
Material - Resin	Nylon
Net Weight	1.160/g
Number of Rows	1
Packaging Type	Bag
Panel Mount	No
Pitch - Mating Interface	4.20mm
Pitch - Termination Interface	4.20mm
Polarized to Mating Part	Yes
Stackable	No
Temperature Range - Operating	-40° to +105°C

#### Solder Process Data

Lead-Free Process Capability	N/A
------------------------------	-----

---

#### Mates With / Use With

##### Mates with Part(s)

Description	Part Number
Mini-Fit TPA2-to-Mini-Fit TPA2 Off-the-Shelf (OTS) Cable Assemblies	<u>145135</u>
Mini-Fit Jr. Receptacle Housings	<u>5557</u>
Mini-Fit TPA2 and Mini-Fit Sigma Single Row Receptacle Housings	<u>200453</u>

##### Use with Part(s)

Description	Part Number
Pre-Crimped Lead Mini-Fit Male-to-Mini-Fit Male, Tin (Sn) Plating, 150.00mm Length, 18 AWG, Red	<u>797580005</u>
Pre-Crimped Lead Mini-Fit Male-to-Mini-Fit Male, Tin (Sn) Plating, 300.00mm Length, 18 AWG, Red	<u>797580013</u>

Mini-Fit Male Crimp Terminals	<u>5558</u>
Mini-Fit Plus Male Crimp Terminals	<u>46012</u>
Mini-Fit Jr. Crimp Grounding Terminals	<u>30490</u>