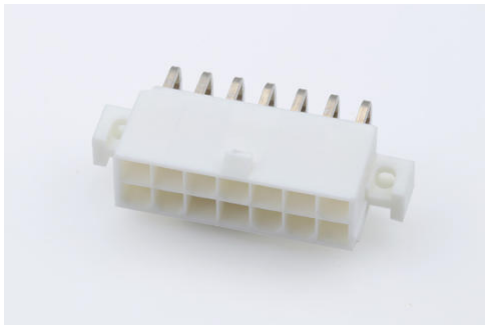




Part Number : [39294149](#)
Product Description : Mini-Fit Jr. Header, Dual Row, Right-Angle, with PCB Mounting Flange, 14 Circuits, PA Polyamide Nylon 6/6 94V-0, Gold (Au) Plating
Series Number : 5569
Status : Active
Product Category : PCB Headers and Receptacles
Engineering Number : 5569-14AG1-210



Documents & Resources

Drawings

[039294149 sd.pdf](#)

3D Models and Design Files

[039294149 stp.zip](#)

Specifications

[AS-5557-001-001.pdf](#)


[PK-5569-002-001.pdf](#)

[PS-45750-001-001.pdf](#)

[PS-5556-001-001.pdf](#)

Product Environment Compliance

Compliance

GADSL/IMDS	Compliant with Exemption 44; 34; 33
China RoHS	 per SJ/T 11365-2006
EU ELV	Not Relevant
Low-Halogen Status	Low-Halogen per IEC 61249-2-21
REACH SVHC	Not Contained per D(2024)7663-DC (21 Jan 2025)
EU RoHS	Compliant per EU 2015/863

[Compliance Statements](#)

- EU RoHS
- REACH SVHC
- Low-Halogen

Industry Documents

- IPC 1752A Class C
- IPC 1752A Class D
- Molex Product Compliance Declaration
- IEC-62474
- chemSHERPA (xml)

Substances of Interest

- PFAS

EU RoHS Certificate of Compliance

Additional Product Compliance Information

Part Details

General

Status	Active
Category	PCB Headers and Receptacles
Series	5569
Description	Mini-Fit Jr. Header, Dual Row, Right-Angle, with PCB Mounting Flange, 14 Circuits, PA Polyamide Nylon 6/6 94V-0, Gold (Au) Plating
Application	Power, Wire-to-Board
Comments	Current = 13A max. per circuit when header is mated to a receptacle loaded with 45750 Mini-Fit Plus HCS Crimp Terminal Crimped to 16 AWG wire. See Molex Product specification PS-5556-001 for additional current de-rating information.
Component Type	PCB Header
Product Name	Mini-Fit Jr.
UPC	800754249546

Agency

CSA	LR19980
UL	E29179

Electrical

Current - Maximum per Contact	13.0A
Voltage - Maximum	600V

Physical

Breakaway	No
Circuits (Loaded)	14
Circuits (maximum)	14
Color - Resin	Natural
Durability (mating cycles max)	30
First Mate / Last Break	No
Flammability	94V-0
Glow-Wire Capable	No
Guide to Mating Part	No
Keying to Mating Part	None
Lock to Mating Part	Yes
Material - Metal	Brass
Material - Plating Mating	Gold
Material - Plating Termination	Tin
Material - Resin	Nylon
Net Weight	5.088/g
Number of Rows	2
Orientation	Right Angle
Packaging Type	Bag
PCB Locator	Yes
PCB Retention	Yes
PCB Thickness - Recommended	1.78mm
Pitch - Mating Interface	4.20mm
Pitch - Termination Interface	4.20mm
Plating min - Mating	0.762µm
Plating min - Termination	2.540µm
Polarized to Mating Part	Yes
Polarized to PCB	Yes
Shrouded	Fully
Stackable	No

Temperature Range - Operating	-40° to +105°C
Termination Interface Style	Through Hole

Solder Process Data

Max-Duration	5
Lead-Free Process Capability	WAVE
Max-Cycle	1
Max-Temp	260

Mates With / Use With

Mates with Part(s)

Description	Part Number
Mini-Fit Jr. Receptacle Housings	<u>5557</u>
Mini-Fit TPA2 and Mini-Fit Sigma Dual Row Receptacle Housings	<u>172708</u>