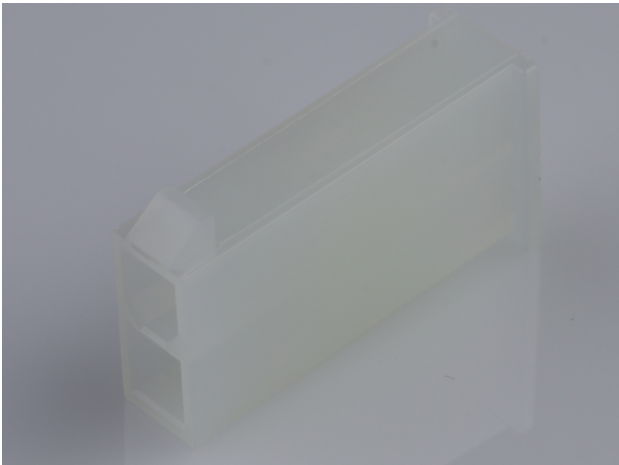




Part Number : [39013023](#)
Product Description : Mini-Fit Jr. Plug Housing,
Dual Row, 2 Circuits, UL 94V-2, without Panel
Mounting Ears, Natural
Series Number : 5559
Status : Active
Product Category : Connector Housings
Engineering Number : 5559-02P1



Documents & Resources

Drawings

[039013023_sd.pdf](#)

3D Models and Design Files


[039013023_stp.zip](#)

Specifications

- [55560001-AS-000.pdf](#)
- [55560002-AS-000.pdf](#)
- [AS-5557-001-001.pdf](#)
- [PK-5559-002-001.pdf](#)
- [PS-45750-001-001.pdf](#)
- [PS-5556-001-001.pdf](#)
- [55560010-TS-000.pdf](#)
- [TS-5556-002-001.pdf](#)

Product Environment Compliance

Compliance

| | |
|--------------------|---|
| GADSL/IMDS | Not Relevant |
| China RoHS |  |
| EU ELV | Compliant per 2000/53/EC |
| Low-Halogen Status | Low-Halogen per IEC 61249-2-21 |
| REACH SVHC | Not Contained per D(2024)7663-DC (21 Jan 2025) |
| EU RoHS | Compliant per EU 2015/863 |

Multiple Part Product Compliance Statements

- Eu RoHS
- REACH SVHC
- Low-Halogen

Multiple Part Industry Compliance Documents

- IPC 1752A Class C
- IPC 1752A Class D
- Molex Product Compliance Declaration
- IEC-62474
- chemSHERPA (xml)

EU RoHS Certificate of Compliance

Part Details

General

| | |
|--------------|--|
| Status | Active |
| Category | Connector Housings |
| Series | 5559 |
| Description | Mini-Fit Jr. Plug Housing, Dual Row, 2 Circuits, UL 94V-2, without Panel Mounting Ears, Natural |
| Application | Power, Wire-to-Board, Wire-to-Wire |
| Comments | Current = 13A max. per circuit when header is mated to a receptacle loaded with 45750 series terminals crimped to 16 AWG wire. See Molex product specification PS-45750-001 for additional current derating information. |
| Product Name | Mini-Fit Jr. |
| UPC | 800753617926 |

Agency

| | |
|-----|---------|
| CSA | LR19980 |
| UL | E29179 |

Physical

| | |
|--------------------|---------|
| Breakaway | No |
| Circuits (maximum) | 2 |
| Color - Resin | Natural |

| | |
|-------------------------------|----------------|
| Flammability | 94V-2 |
| Gender | Plug |
| Glow-Wire Capable | No |
| Keying to Mating Part | None |
| Lock to Mating Part | Yes |
| Material - Resin | Nylon |
| Net Weight | 0.857/g |
| Number of Rows | 2 |
| Packaging Type | Bag |
| Panel Mount | No |
| Pitch - Mating Interface | 4.20mm |
| Pitch - Termination Interface | 4.20mm |
| Polarized to Mating Part | Yes |
| Stackable | No |
| Temperature Range - Operating | -40° to +105°C |

Solder Process Data

| | |
|------------------------------|-----|
| Lead-Free Process Capability | N/A |
|------------------------------|-----|

Mates With / Use With

Mates with Part(s)

| Description | Part Number |
|--|---------------|
| Mini-Fit TPA2 and Mini-Fit Sigma Dual Row Receptacle Housings | <u>172708</u> |
| Mini-Fit Jr. Receptacle Housings | <u>5557</u> |
| Mini-Fit TPA2-to-Mini-Fit TPA2 Off-the-Shelf (OTS) Cable Assemblies | <u>45135</u> |
| Mini-Fit Jr.-to-Mini-Fit Jr. Off-the-Shelf (OTS) Overmolded Cable Assemblies | <u>245135</u> |

Use with Part(s)

| Description | Part Number |
|---|------------------|
| Pre-Crimped Lead Mini-Fit Male-to-Mini-Fit Male, Tin (Sn) Plating, 150.00mm Length, 18 AWG, Red | <u>797580005</u> |

| | |
|---|------------------|
| Pre-Crimped Lead Mini-Fit Male-to-Mini-Fit Male, Tin (Sn) Plating, 300.00mm Length, 18 AWG, Red | <u>797580013</u> |
| Mini-Fit Male Crimp Terminals | <u>5558</u> |
| Mini-Fit Plus Male Crimp Terminals | <u>46012</u> |
| Mini-Fit Jr. Crimp Grounding Terminals | <u>30490</u> |
| Mini-Fit Jr. Hermaphroditic Backshells | <u>204723</u> |

This document was generated on Apr 26, 2025