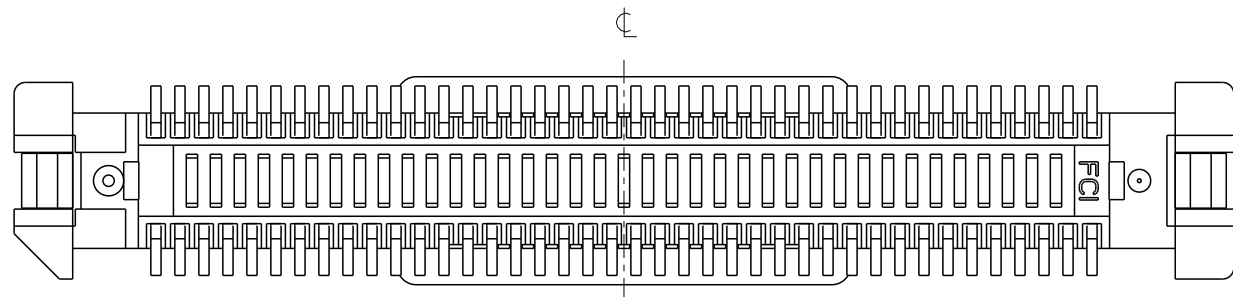
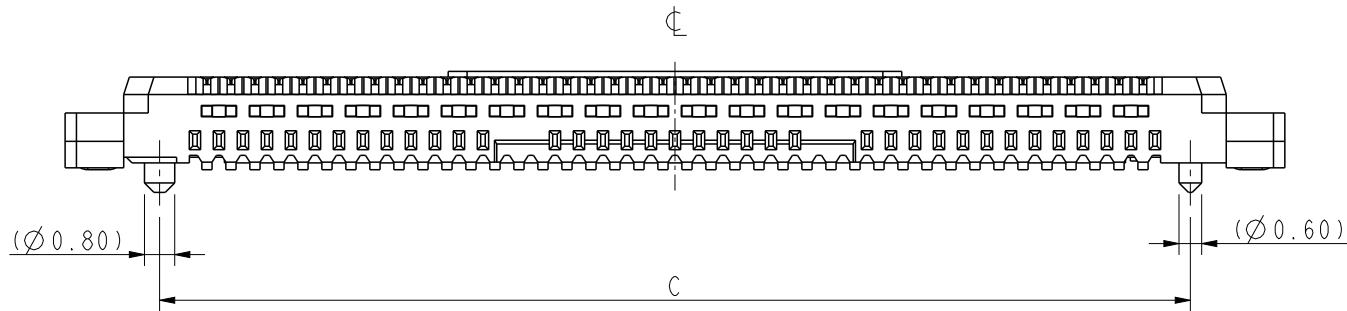
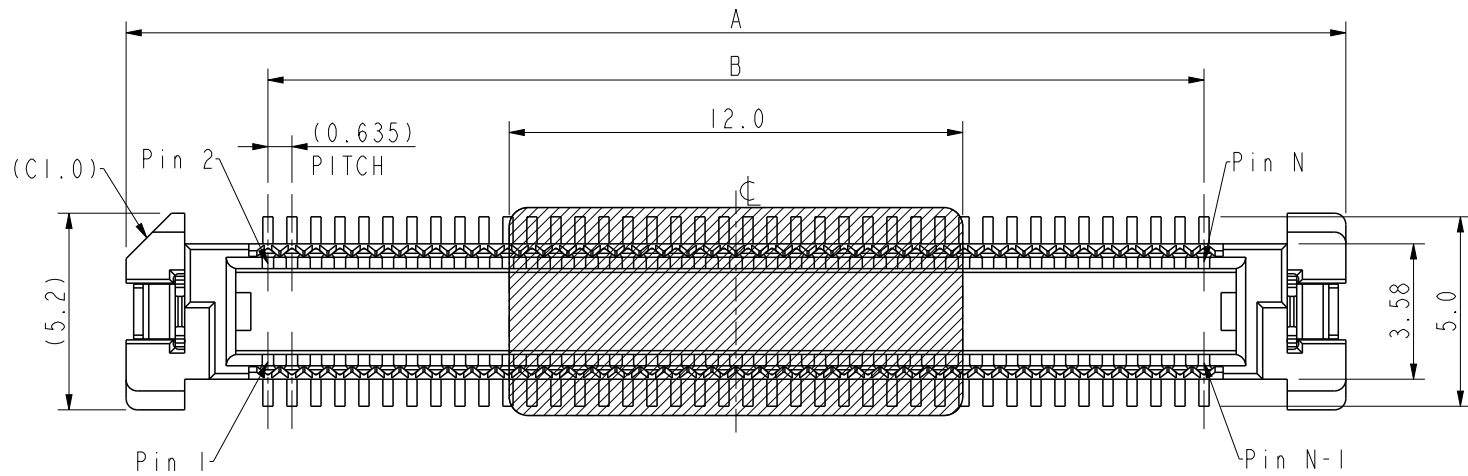
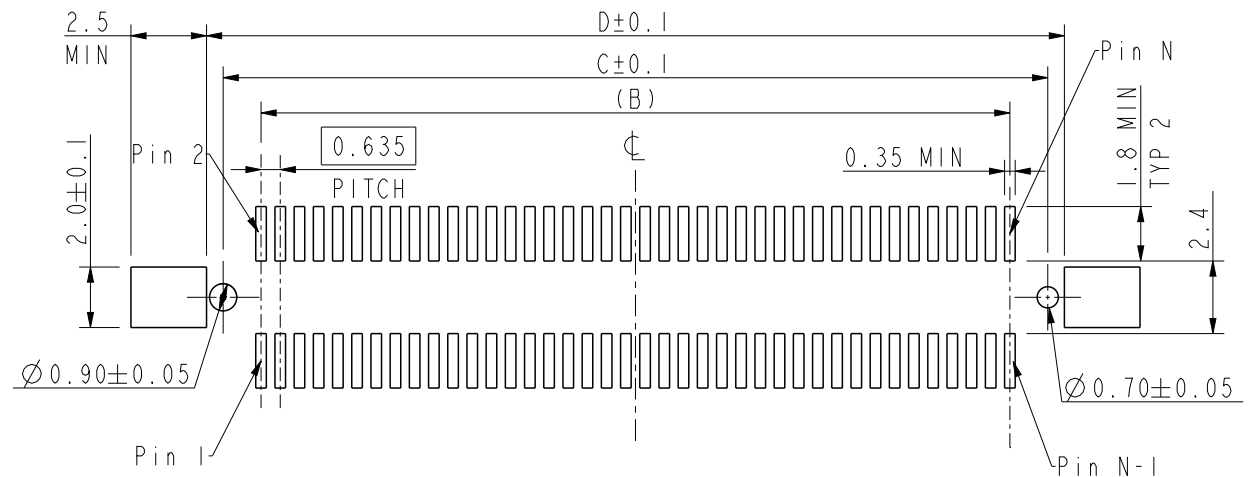
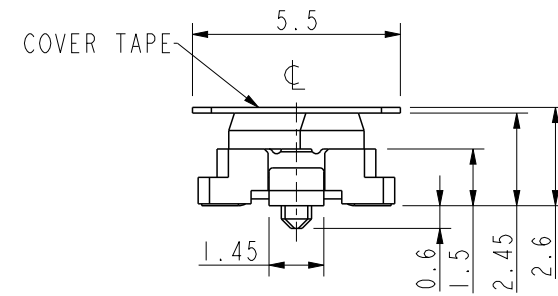
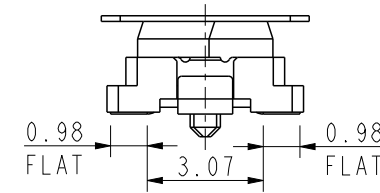
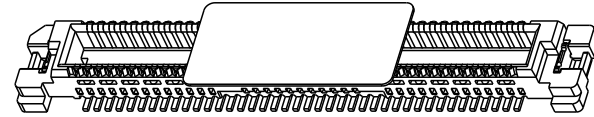


Part Number	POS	DIM "A"	DIM "B"	DIM "C"	DIM "D"
10169697-40000RLF	80	32.27	24.765	27.27	28.37
10169697-70000RLF	140	51.32	43.815	46.32	47.42



- NOTES:
- MATERIAL:
 - HOUSING: LCP, WHITE, UL94V-0
 - TERMINAL AND HOLD DOWN: COPPER ALLOY.
 - VACUUM TAPE: POLYIMIDE (PI)
 - PLATING:
 - 1.5µm MIN NI UNDER PLATING;
 - 0.05µm MIN AU ON SOLDER AREA;
 - 0.10µm MIN AU ON MATING AREA.
 - PRODUCTION SPECIFICATION GS-12-1709;
 - THIS HOUSING WILL WITHSTAND EXPOSURE TO 260°C PEAK TEMPERATURE FOR 20 SECONDS IN A IR REFLOW SOLDERING APPLICATION;
 - THIS PRODUCT MEETS EUROPEAN UNION DIRECTIVES AND OTHER COUNTRY REGULATIONS AS DESCRIBED IN GS-22-008;
 - COPLANARITY AREA OF TERMINATION 0.1MM MAX.

spec ref				dr		Hao-Liang Sun		2022/11/03		<div>projection</div> <div></div>		<div>mm</div> <div></div>		size		A3		scale		5:1									
tolerance std		TOLERANCES UNLESS OTHERWISE SPECIFIED						ecn no						-															
								chr						-		-													
								appr						-		-													
								product family						rel level		Preliminary													
surface		linear		0.X		±0.25		Amphenol FCi		title		HEADER CONN 0.635 MM PITCH BTB						dwg no		10169697						rev		1	
				0.XX		±0.15																							
				0.XXX		±0.05																							
		angular		0°		±2°		amphenol-icc.com		cat. no.				Product - Customer Drw				sheet 1 of 1											



RECOMMENDED PCB PATTERN LAYOUT