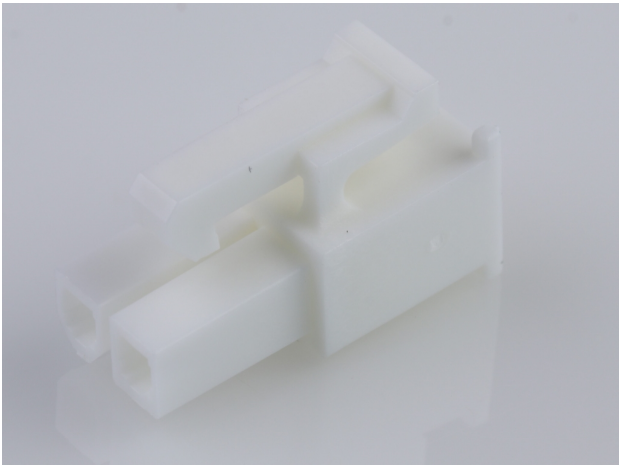




Part Number : [39014021](#)
Product Description : Mini-Fit Jr. Receptacle
Housing, Single Row, 2 Circuits, UL 94V-0,
Natural
Series Number : 5557
Status : Active
Product Category : Connector Housings
Engineering Number : 5557-02R2-210



Documents & Resources

Drawings

[039014021_sd.pdf](#)
[PK-5557-002-000.pdf](#)

3D Models and Design Files


[039014021_stp.zip](#)

Specifications

[55560001-AS-000.pdf](#)
[55560002-AS-000.pdf](#)
[AS-5557-001-001.pdf](#)
[PS-45750-001-001.pdf](#)
[55560002-PS-CH-000.pdf](#)
[55560002-PS-ES-000.pdf](#)
[55560002-PS-SK-000.pdf](#)
[PS-5556-001-001.pdf](#)
[PS-5556-002-001.pdf](#)
[55560010-TS-000.pdf](#)
[TS-5556-002-001.pdf](#)
[55570000-TS-000.pdf](#)

Product Environment Compliance

Compliance

| | |
|------------|---|
| GADSL/IMDS | Not Relevant |
| China RoHS |  |
| EU ELV | Not Relevant |

| | |
|--------------------|--|
| Low-Halogen Status | Low-Halogen per IEC 61249-2-21 |
| REACH SVHC | Not Contained per D(2024)7663-DC (21 Jan 2025) |
| EU RoHS | Compliant per EU 2015/863 |

Multiple Part Product Compliance Statements

- Eu RoHS
- REACH SVHC
- Low-Halogen

Multiple Part Industry Compliance Documents

- IPC 1752A Class C
- IPC 1752A Class D
- Molex Product Compliance Declaration
- IEC-62474
- chemSHERPA (xml)

EU RoHS Certificate of Compliance

Part Details

General

| | |
|--------------|--|
| Status | Active |
| Category | Connector Housings |
| Series | 5557 |
| Description | Mini-Fit Jr. Receptacle Housing, Single Row, 2 Circuits, UL 94V-0, Natural |
| Application | Power, Wire-to-Board, Wire-to-Wire |
| Comments | Current = 13A max. per circuit when header is mated to a receptacle loaded with 45750 series terminals crimped to 16 AWG wire. See Molex product specification PS-45750-001 for additional current derating information. |
| Product Name | Mini-Fit Jr. |
| UPC | 822348720477 |

Agency

| | |
|-----|---------|
| CSA | LR19980 |
| UL | E29179 |

Physical

| | |
|-------------------------------|----------------|
| Breakaway | No |
| Circuits (maximum) | 2 |
| Color - Resin | Natural |
| Flammability | 94V-0 |
| Gender | Receptacle |
| Glow-Wire Capable | No |
| Keying to Mating Part | None |
| Lock to Mating Part | Yes |
| Material - Resin | Nylon |
| Net Weight | 0.694/g |
| Number of Rows | 1 |
| Packaging Type | Bag |
| Panel Mount | No |
| Pitch - Mating Interface | 4.20mm |
| Pitch - Termination Interface | 4.20mm |
| Polarized to Mating Part | Yes |
| Stackable | No |
| Temperature Range - Operating | -40° to +105°C |

Solder Process Data

| | |
|------------------------------|-----|
| Lead-Free Process Capability | N/A |
|------------------------------|-----|

Mates With / Use With

Mates with Part(s)

| Description | Part Number |
|--|-------------------|
| Mini-Fit Jr. Plug Housing, Single Row, 2 Circuits, UL 94V-0, with Panel Mounting Ears, Natural | <u>469990657</u> |
| Mini-Fit Jr. Plug Housing, Single Row, 2 Circuits, UL 94V-0, without Panel Mounting Ears, Natural | <u>469990658</u> |
| Mini-Fit TPA2 Plug Housing, 4.20mm Pitch, Single Row, UL 94V-0, Low-Halogen, Panel Mount, 2 Circuits | <u>2004880002</u> |

| | |
|--|-------------------|
| Mini-Fit TPA2 Plug Housing, 4.20mm Pitch, Single Row, UL 94V- 0, Low-Halogen, Panel Mount, 2 Circuits | <u>2004881002</u> |
| Mini-Fit TPA2 Plug Housing, 4.20mm Pitch, Single Row, UL 94V- 2, Glow-Wire Capable, Panel Mount, 2 Circuits | <u>2004881102</u> |
| Mini-Fit TPA2 Plug Housing, 4.20mm Pitch, Single Row, UL 94V- 0, Low-Halogen, 2 Circuits | <u>2004710002</u> |

Use with Part(s)

| Description | Part Number |
|--|------------------|
| Pre-Crimped Lead Mini-Fit Female- to-Mini-Fit Female, Tin (Sn) Plating, 150.00mm Length, 18 AWG, Red | <u>797580001</u> |
| Pre-Crimped Lead Mini-Fit Female- to-Mini-Fit Female, Tin (Sn) Plating, 300.00mm Length, 18 AWG, Red | <u>797580009</u> |
| Mini-Fit Female Crimp Terminals | <u>5556</u> |
| Mini-Fit Plus Female Crimp Terminals | <u>45750</u> |