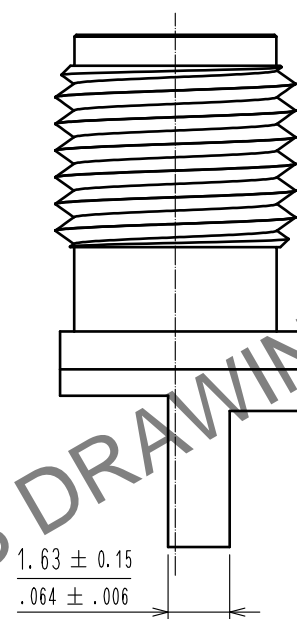
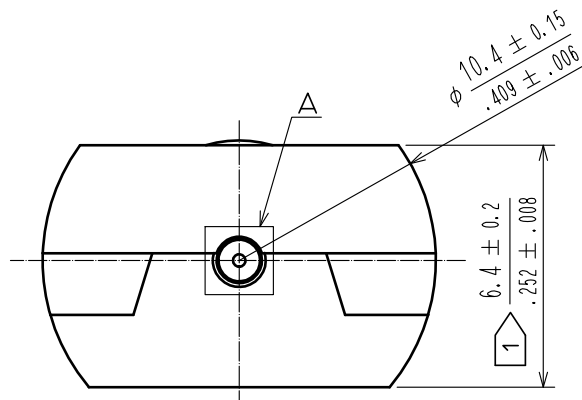
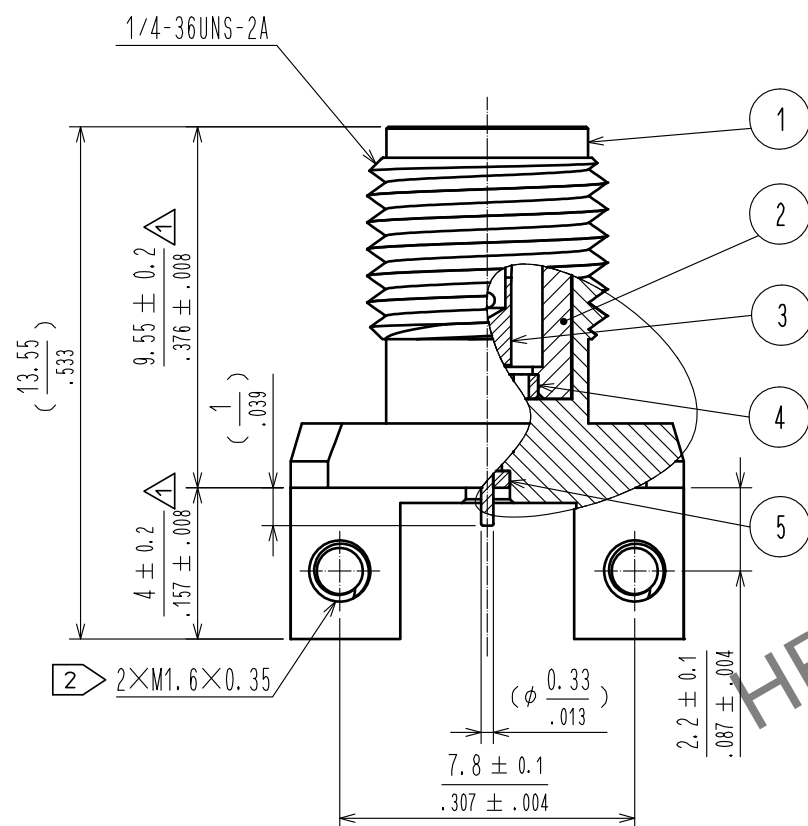
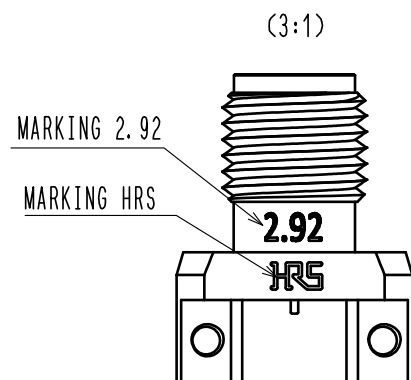
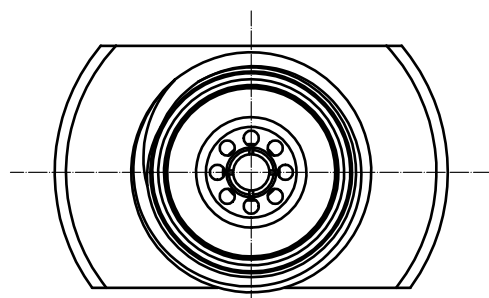
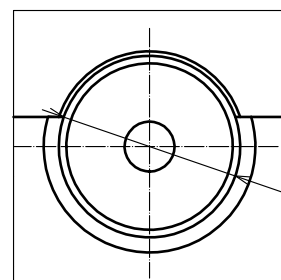


Sep.1.2024 Copyright 2024 HIROSE ELECTRIC CO., LTD. All Rights Reserved.
In case of consideration for using Automotive equipment / device which demand high reliability, kindly contact our sales window correspondents.

A
B
C
D
E
F



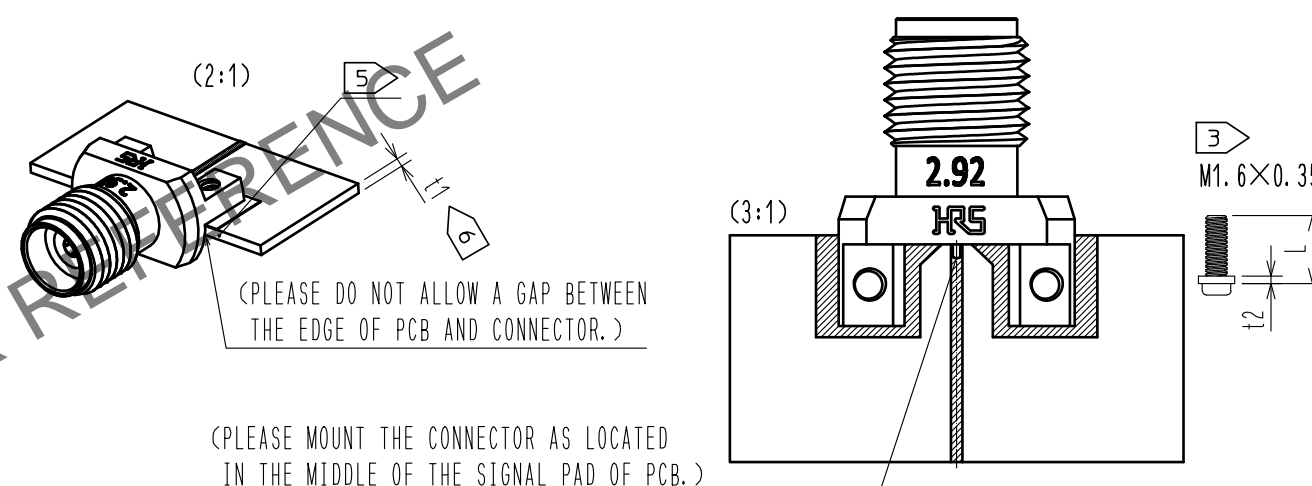
A (20:1)



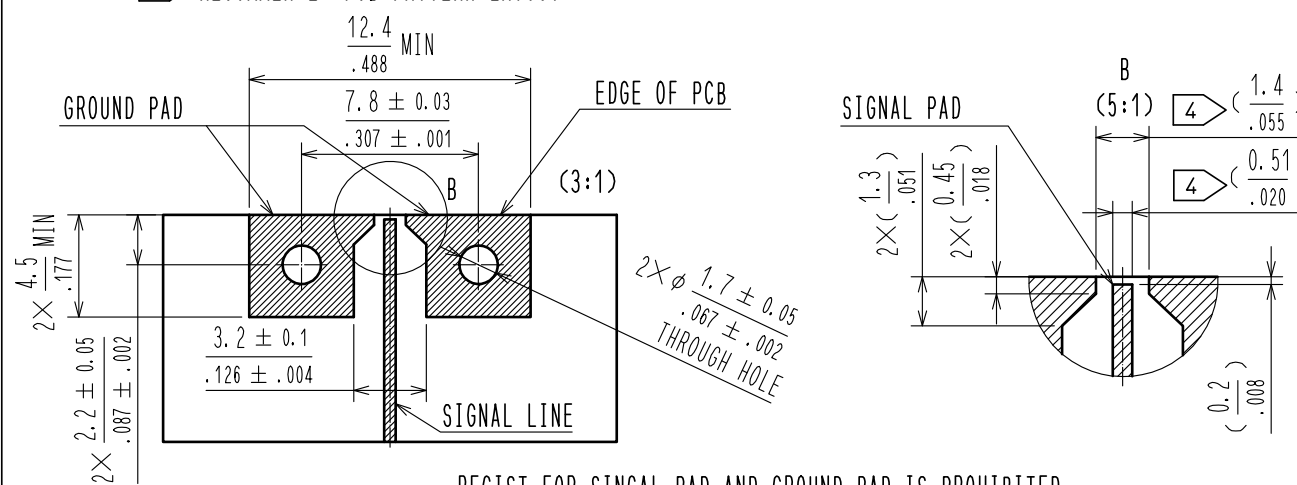
- NOTES
- 1 WHEN MATING THE CONNECTOR, PLEASE HOLD MILLING AREA OF 6.4 ± 0.2 [mm] WITH A SPANNER NOT TO PLACE STRESS ON PCB BY THE TORQUE.
 - 2 M1.6 \times 0.35 SCREW TIGHTENING TORQUE IS 0.09 [N \cdot m].
 - 3 PLEASE USE A PCB MOUNTING SCREW OF THE LENGTH OF L [mm].
THE LENGTH OF L [mm] IS PCB THICKNESS t1 [mm] + SPRING WASHER THICKNESS t2 [mm] + 1.8 [mm].
 - 4 THE INDICATED DIMENSION IS THE CASE OF WHICH DIELECTRIC CONSTANT OF SUBSTRATE IS 3.6 AND THICKNESS IS t=0.25[mm].
LAND PATTERN LAYOUT DEPENDS ALSO ON ELECTRIC CONSTANT, THICKNESS AND LAYER CONSTRUCTION OF PCB.
FOR BETTER PERFORMANCE, EM SIMULATION OF PCB WITH CONNECTOR IS RECOMMENDED.
 - 5 SIDE PLATING OF THE BOARD IS RECOMMENDED.
 - 6 RECOMMENDED PCB THICKNESS t1 IS GREATER THAN 1.0 [mm]

MOUNTING OF CONNECTOR


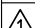

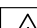
- (1) WHEN THE CONNECTOR IS MOUNTED ON PCB, PLEASE DO NOT ALLOW A GAP BETWEEN THE EDGE OF PCB AND CONNECTOR.
- (2) PLEASE MOUNT THE CONNECTOR AS LOCATED IN THE MIDDLE OF THE SIGNAL PAD OF PCB.
- (3) SOLDERING OF CONDUCTOR SHOULD BE MADE AFTER MOUNTING THE CONNECTOR ON THE BOARD BY SCREWS.
- (4) SOLDERING CONDITIONS: FOR THE MANUAL SOLDERING, SOLDERING IRON BIT TEMPERATURE IS 380 $^{\circ}$ C MAX. FOR 5 SECONDS MAX.



4 RECOMMENDED PCB PATTERN LAYOUT



REGIST FOR SINGAL PAD AND GROUND PAD IS PROHIBITED.

| | | | | | | | |
|---|---|------------------|--|---|--------------------------|-------------------------|------------------|
| 2 | STAINLESS STEEL | PASSIVATE | 5 | POLYETHER IMIDE | | | |
| 1 | BRASS | GOLD PLATING | 4 | POLYETHER IMIDE | | | |
| NO. | MATERIAL | FINISH . REMARKS | NO. | MATERIAL | FINISH . REMARKS | | |
| UNITS mm/inch |  | SCALE 5 : 1 | COUNT  3 | DESCRIPTION OF REVISIONS DIS-D-00005284 | DESIGNED AH. MARUYAMA | CHECKED NK. NINOMIYA | DATE 20201009 |
|  HIROSE ELECTRIC CO., LTD. | APPROVED : KH. IKEDA | | 20180208 | DRAWING NO. EDC-376836-00-00 | | | |
| | CHECKED : TS. NOBE | | 20180208 | PART NO. HK-LR-EL | | | |
| | DESIGNED : AH. MARUYAMA | | 20180208 | CODE NO. CL338-0005-0-00 | | | |
| | DRAWN : AH. MARUYAMA | | 20180208 |  1 | | | |

RoHS COMPLIANT