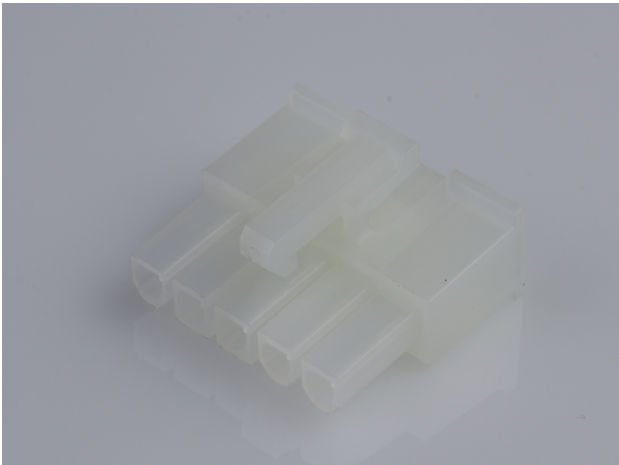




Part Number : [39014050](#)
Product Description : Mini-Fit Jr. Receptacle Housing, Single Row, 5 Circuits, UL 94V-2, Natural
Series Number : 5557
Status : Active
Product Category : Connector Housings
Engineering Number : 5557-05R2



Documents & Resources

Drawings

[039014050_sd.pdf](#)
[PK-5557-002-000.pdf](#)

3D Models and Design Files


[039014050_stp.zip](#)

Specifications

[55560001-AS-000.pdf](#)
[55560002-AS-000.pdf](#)
[AS-5557-001-001.pdf](#)
[PS-45750-001-001.pdf](#)
[55560002-PS-CH-000.pdf](#)
[55560002-PS-ES-000.pdf](#)
[55560002-PS-SK-000.pdf](#)
[PS-5556-001-001.pdf](#)
[PS-5556-002-001.pdf](#)
[55560010-TS-000.pdf](#)
[TS-5556-002-001.pdf](#)
[55570000-TS-000.pdf](#)

Product Environment Compliance

Compliance

GADSL/IMDS	Not Relevant
China RoHS	
EU ELV	Not Relevant

Low-Halogen Status	Low-Halogen per IEC 61249-2-21
REACH SVHC	Not Contained per D(2024)7663-DC (21 Jan 2025)
EU RoHS	Compliant per EU 2015/863

Multiple Part Product Compliance Statements

- Eu RoHS
- REACH SVHC
- Low-Halogen

Multiple Part Industry Compliance Documents

- IPC 1752A Class C
- IPC 1752A Class D
- Molex Product Compliance Declaration
- IEC-62474
- chemSHERPA (xml)

EU RoHS Certificate of Compliance

Part Details

General

Status	Active
Category	Connector Housings
Series	5557
Description	Mini-Fit Jr. Receptacle Housing, Single Row, 5 Circuits, UL 94V-2, Natural
Application	Power, Wire-to-Board, Wire-to-Wire
Comments	Current = 13A max. per circuit when header is mated to a receptacle loaded with 45750 series terminals crimped to 16 AWG wire. See Molex product specification PS-45750-001 for additional current derating information.
Product Name	Mini-Fit Jr.
UPC	800753584105

Agency

CSA	LR19980
UL	E29179

Physical

Breakaway	No
Circuits (maximum)	5
Color - Resin	Natural
Flammability	94V-2
Gender	Receptacle
Glow-Wire Capable	No
Keying to Mating Part	None
Lock to Mating Part	Yes
Material - Resin	Nylon
Net Weight	1.300/g
Number of Rows	1
Packaging Type	Bag
Panel Mount	No
Pitch - Mating Interface	4.20mm
Pitch - Termination Interface	4.20mm
Polarized to Mating Part	Yes
Stackable	No
Temperature Range - Operating	-40° to +105°C

Solder Process Data

Lead-Free Process Capability	N/A
------------------------------	-----

Mates With / Use With

Mates with Part(s)

Description	Part Number
Mini-Fit Jr. Plug Housing, Single Row, 5 Circuits, UL 94V-2, with Panel Mounting Ears, Natural	<u>39014052</u>
Mini-Fit Jr. Plug Housing, Single Row, 5 Circuits, UL 94V-2, without Panel Mounting Ears, Natural	<u>39014056</u>
Mini-Fit Jr. Header, Single Row, Right-Angle, with Snap-in Plastic Peg PCB Lock, 5 Circuits, PA Polyamide Nylon 6/6, 94V-2, Tin (Sn) Plating	<u>39303055</u>

Mini-Fit Jr. Header, Single Row, Right-Angle, with Snap-in Plastic Peg PCB Lock, 5 Circuits, PA Polyamide Nylon 6/6, 94V-2, (Au) Plating	<u>39303057</u>
Mini-Fit TPA2 Plug Housing, 4.20mm Pitch, Single Row, UL 94V-0, Low-Halogen, Panel Mount, 5 Circuits	<u>2004880005</u>
Mini-Fit TPA2 Plug Housing, 4.20mm Pitch, Single Row, UL 94V-0, Low-Halogen, Panel Mount, 5 Circuits	<u>2004881005</u>
Mini-Fit TPA2 Plug Housing, 4.20mm Pitch, Single Row, UL 94V-2, Glow-Wire Capable, Panel Mount, 5 Circuits	<u>2004881105</u>
Mini-Fit TPA2 Plug Housing, 4.20mm Pitch, Single Row, UL 94V-0, Low-Halogen, 5 Circuits	<u>2004710005</u>

Use with Part(s)

Description	Part Number
Pre-Crimped Lead Mini-Fit Female-to-Mini-Fit Female, Tin (Sn) Plating, 150.00mm Length, 18 AWG, Red	<u>797580001</u>
Pre-Crimped Lead Mini-Fit Female-to-Mini-Fit Female, Tin (Sn) Plating, 300.00mm Length, 18 AWG, Red	<u>797580009</u>
Mini-Fit Female Crimp Terminals	<u>5556</u>
Mini-Fit Plus Female Crimp Terminals	<u>45750</u>