

MARKING 2.4

MARKING HRS

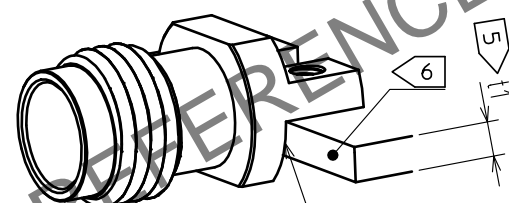
Diagram illustrating the marking on a bolt and nut. The bolt head is marked with "2.4" and "HRS". The nut is marked with "HRS".

- NOTES

 - ① WHEN MATING THE CONNECTOR , PLEASE HOLD MILLING AREA OF 6.4 ± 0.2 WITH A WRENCH.
 - ② 0-80UNF-2B SCREW TIGHTENING TORQUE IS $0.09 \text{ N} \cdot \text{m}$. PLEASE TIGHTEN THE SCREWS EVENLY WHEN MOUNTING THE CONNECTORS TO ENSURE STABLE ELECTRICAL CONTACT.
 - ③ PLEASE USE A PCB MOUNTING SCREW OF THE LENGTH OF $L(\text{mm})$.
THE LENGTH OF $L(\text{mm})$ IS PCB THICKNESS $t_1(\text{mm})$ + SPRING WASHER THICKNESS $t_2(\text{mm})$ + $1.8(\text{mm})$.
PLEASE USE A SCREW WITH SPRING WASHER.
 - ④ THE INDICATED DIMENSION IS THE CASE OF WHICH DIELECTRIC CONSTANT OF SUBSTRATE IS 3.35 AND THICKNESS IS $t=0.2\text{mm}$. LAND PATTERN LAYOUT DEPENDS ALSO ON ELECTRIC CONSTANT, THICKNESS AND LAYER CONSTRUCTION OF PCB. FOR BETTER PERFORMANCE, SIMULATION OF PCB WITH CONNECTOR IS RECOMMENDED.
 - ⑤ RECOMMENDED PCB THICKNESS t_1 IS GREATER THAN 1.0mm .
 - ⑥ SIDE PLATING OF THE BOARD IS RECOMMENDED.
 - ④ 7. THIS PRODUCT IS A SOLDERLESS CONNECTOR FOR PROTOTYPE EVALUATION OF HIGH SPEED TRANSMISSION BOARDS. IT IS NOT RECOMMENDED FOR USE IN ACTUAL COMMERCIAL EQUIPMENT.

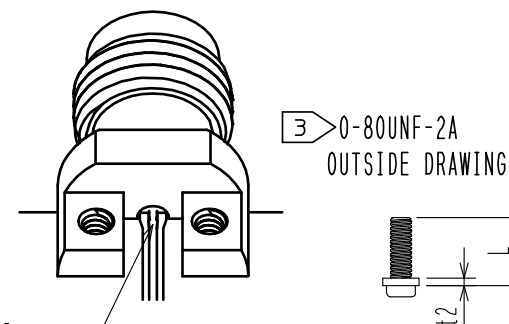
(1) WHEN THE CONNECTOR IS MOUNTED ON PCB. PLEASE DO NOT ALLOW A GAP BETWEEN THE EDGE OF PCB AND CONNECTOR.
(2) PLEASE MOUNT THE CONNECTOR AS LOCATED IN THE MIDDLE OF THE SIGNAL PAD OF PCB.

△ (Deleted (3))



(PLEASE DO NOT ALLOW A GAP
BETWEEN THE EDGE OF PCB AND CONNECTOR.)

(PLEASE MOUNT THE CONNECTOR AS LOCATED
IN THE MIDDLE OF THE SIGNAL PAD OF PCB.)

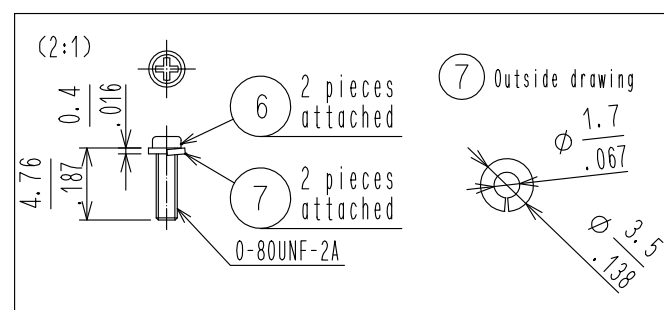
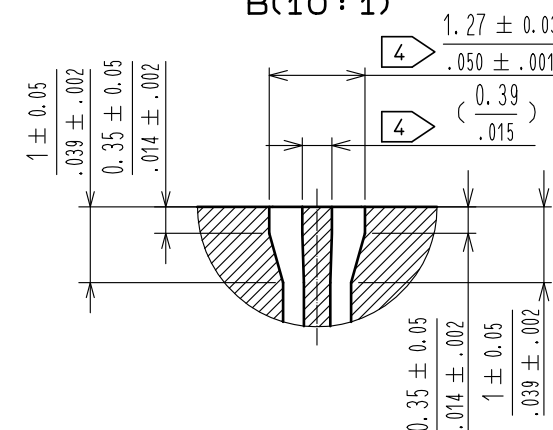



3 0-80UNF-2A
OUTSIDE DRAWING

[illegible]

REGIST FOR SIGNAL PAD AND GROUND PAD IS PROHIBITED.

(DRAWING CHANGED)

 $B(10 : 1)$ 

| | | | | | | | | | |
|---|--------------------------|------------------|----------|-----------------|--|------------------|------------------------|-------------------------|-----------------|
| 3 | BERYLLIUM COPPER | GOLD PLATING | 7 | STAINLESS STEEL | Spring washer | | | | |
| 2 | STAINLESS STEEL | PASSIVATE | 6 | STEEL | 0-80UNF-2A Screw | | | | |
| 1 | BRASS | NICKEL PLATING | 5 | POLYETHER IMIDE | | | | | |
| | | | 4 | POLYETHER IMIDE | | | | | |
| NO. | MATERIAL | FINISH . REMARKS | | NO. | MATERIAL | FINISH . REMARKS | | | |
| UNITS mm/inch | | SCALE 5 : 1 | | COUNT 2 | DESCRIPTION OF REVISIONS DIS-D-00016641 | | DESIGNED TS. KANEKO | CHECKED TS. NAKAGAWA | DATE 2023082 |
|  HIROSE ELECTRIC CO., LTD. | APPROVED : KH. IKEDA | | 20170123 | | EDC-368795-12-01 | | | | |
| | CHECKED : TS. NOBE | | 20170120 | | H2. 4-LR-SR2<12> | | | | |
| | DESIGNED : TP. MATSUMOTO | | 20170120 | | CL0338-0603-0-12 | | | | |
| | DRAWN : TP. MATSUMOTO | | 20170120 | | | | | | |