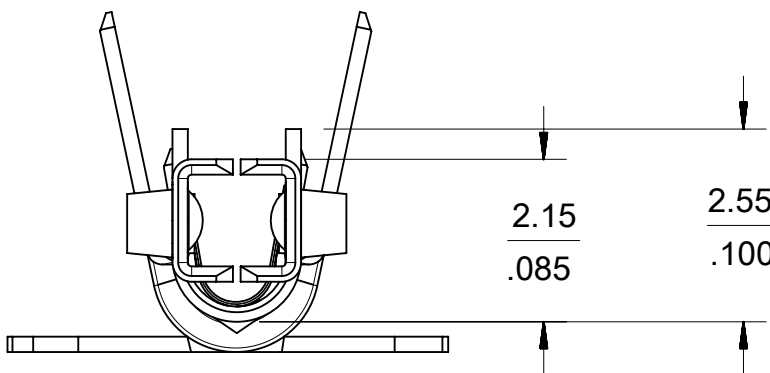
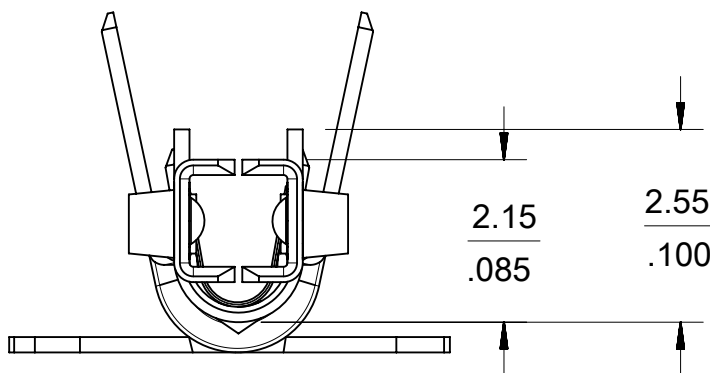
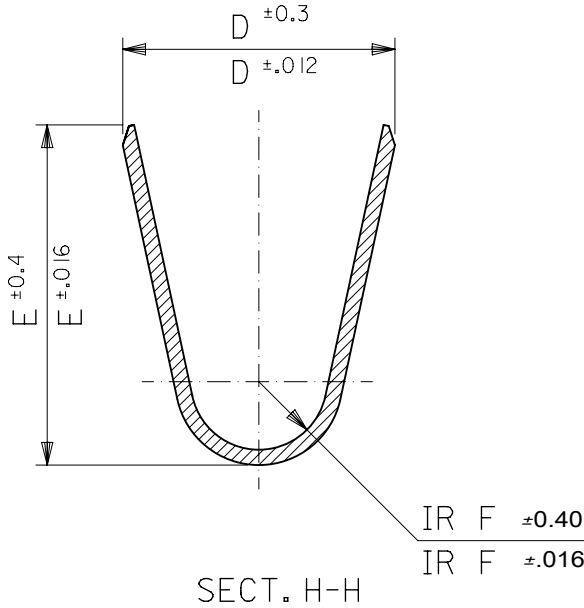
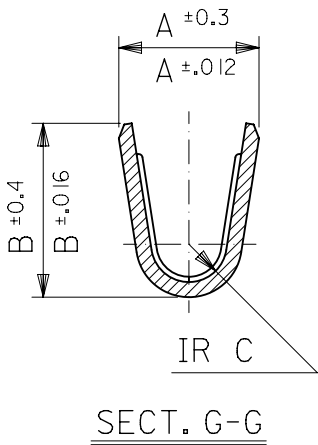


#18-24 TERMINAL SHOWN

NOTES

1. MATERIAL: SEE CHART.
2. FINISH: SEE CHART.
3. PRODUCT SPECIFICATION: PS-5556-001, PS-5556-002, PS-5556-003.
4. PACKAGING SPECIFICATION: PK-5556-001 FOR CHAIN TERMINALS
PK-5556-003 FOR LOOSE TERMINALS.
5. MATES WITH: 5558, 5566, 5569, 30069, 30070, 42440, 42404, 43879, 43810, 44068.
6. APPLICABLE HOUSING: 5557, 30067, 44516, OR 42474.
7. THE NUMBER OF SERRATIONS TO BE ONE FOR WIRE RANGE #22-28.
8. WHEN TERMINALS ARE INSTALLED IN THE HOUSING THE WIRES ARE TO BE DRESSED IN SUCH A MANNER TO ALLOW THE TERMINALS TO FLOAT FREELY IN THE POCKET.
9. THIS TERMINAL IS DESIGNED FOR SINGLE WIRE CRIMPING.
10. PART CONFORMS TO CLASS "B" REQUIREMENTS OF COSMETIC SPECIFICATION PS-45499-002.
11. TEXT ON PART IS FOR REFERENCE ONLY. TEXT AND TEXT LOCATION MAY VARY DEPENDING ON PART NUMBER AND/OR TOOL.
12. TIN PLATING THICKNESS MEASURED AS APPLIED PRIOR TO OPTIONAL REFLOW. POST REFLOW PLATING THICKNESS TO BE 1.0um MIN
13. GOLD MAY OR MAY NOT BE SHOWN ON OUTSIDE OF TERMINAL.



CONTACT DIMPLE CONFIGURATIONS

THIS DRAWING CONTAINS INFORMATION THAT IS PROPRIETARY TO MOLEX ELECTRONIC TECHNOLOGIES, LLC AND SHOULD NOT BE USED WITHOUT WRITTEN PERMISSION													
DIMENSION UNITS		SCALE		CURRENT REV DESC:				<div>molex</div>					
IN/MM		NTS											
GENERAL TOLERANCES (UNLESS SPECIFIED)				EC NO: 801507 DRWN: JERRYW8 2024/10/17 CHK'D: XQZHANG 2024/10/18 APPR: XQZHANG 2024/10/18				MINI FIT JR SELECT GOLD FEMALE CRIMP TERMINAL					
												MM	
4 PLACES		±										±	
3 PLACES		±										± 0.01	
2 PLACES		±	0.25									± 0.01	
1 PLACE		±	0.25	±									
0 PLACES		±		±									
ANGULAR TOL				±		3.0 °		PRODUCT CUSTOMER DRAWING					
DOCUMENT NUMBER		DOC TYPE		DOC PART		REVISION							
SD-5556-006				PSD		001		H2					
DRAFT WHERE APPLICABLE MUST REMAIN WITHIN DIMENSIONS				THIRD ANGLE PROJECTION		DRAWING		SERIES		MATERIAL NUMBER			
				C-SIZE		5556		SEE CHART		CUSTOMER			
						C-SIZE		5556		SEE CHART			
												GENERAL MARKET	
						C-SIZE		5556		SEE CHART			
												GENERAL MARKET	
						C-SIZE		5556		SEE CHART			
												GENERAL MARKET	
						C-SIZE		5556		SEE CHART			
												GENERAL MARKET	
						C-SIZE		5556		SEE CHART			
												GENERAL MARKET	
						C-SIZE		5556		SEE CHART			
												GENERAL MARKET	
						C-SIZE		5556		SEE CHART			
												GENERAL MARKET	
						C-SIZE		5556		SEE CHART			
												GENERAL MARKET	
						C-SIZE		5556		SEE CHART			
												GENERAL MARKET	
						C-SIZE		5556		SEE CHART			
												GENERAL MARKET	
						C-SIZE		5556		SEE CHART			
												GENERAL MARKET	
						C-SIZE		5556		SEE CHART			
												GENERAL MARKET	
						C-SIZE		5556		SEE CHART			
												GENERAL MARKET	
						C-SIZE		5556		SEE CHART			
												GENERAL MARKET	
						C-SIZE		5556		SEE CHART			
												GENERAL MARKET	
						C-SIZE		5556		SEE CHART			
												GENERAL MARKET	
						C-SIZE		5556		SEE CHART			
												GENERAL MARKET	
						C-SIZE		5556		SEE CHART			
												GENERAL MARKET	
						C-SIZE		5556		SEE CHART			
												GENERAL MARKET	
						C-SIZE		5556		SEE CHART			
												GENERAL MARKET	
						C-SIZE		5556		SEE CHART			
												GENERAL MARKET	
						C-SIZE		5556		SEE CHART			
												GENERAL MARKET	
						C-SIZE		5556		SEE CHART			
												GENERAL MARKET	
						C-SIZE		5556		SEE CHART			
												GENERAL MARKET	
						C-SIZE		5556		SEE CHART			
												GENERAL MARKET	
						C-SIZE		5556		SEE CHART			
												GENERAL MARKET	
						C-SIZE		5556		SEE CHART			
												GENERAL MARKET	
						C-SIZE		5556		SEE CHART			
												GENERAL MARKET	
						C-SIZE		5556		SEE CHART			
												GENERAL MARKET	
						C-SIZE		5556		SEE CHART			
												GENERAL MARKET	
						C-SIZE		5556		SEE CHART			
												GENERAL MARKET	
						C-SIZE		5556		SEE CHART			
												GENERAL MARKET	
						C-SIZE		5556		SEE CHART			
												GENERAL MARKET	
						C-SIZE		5556		SEE CHART			
												GENERAL MARKET	
						C-SIZE		5556		SEE CHART			
												GENERAL MARKET	
						C-SIZE		5556		SEE CHART			
												GENERAL MARKET	
						C-SIZE		5556		SEE CHART			
												GENERAL MARKET	
						C-SIZE		5556		SEE CHART			
												GENERAL MARKET	
						C-SIZE		5556		SEE CHART			
												GENERAL MARKET	
						C-SIZE		5556		SEE CHART			
												GENERAL MARKET	
						C-SIZE		5556		SEE CHART			
												GENERAL MARKET	
						C-SIZE		5556		SEE CHART			
												GENERAL MARKET	
						C-SIZE		5556		SEE CHART			
												GENERAL MARKET	
						C-SIZE		5556		SEE CHART			
												GENERAL MARKET	
						C-SIZE		5556		SEE CHART			
												GENERAL MARKET	
						C-SIZE		5556		SEE CHART			
												GENERAL MARKET	
						C-SIZE		5556		SEE CHART			
												GENERAL MARKET	
						C-SIZE		5556		SEE CHART			
												GENERAL MARKET	
						C-SIZE		5556		SEE CHART			
												GENERAL MARKET	
						C-SIZE		5556		SEE CHART			
												GENERAL MARKET	
						C-SIZE		5556		SEE CHART			
												GENERAL MARKET	
						C-SIZE		5556		SEE CHART			
												GENERAL MARKET	
						C-SIZE		5556		SEE CHART			
												GENERAL MARKET	
						C-SIZE		5556		SEE CHART			
												GENERAL MARKET	
						C-SIZE		5556		SEE CHART			
												GENERAL MARKET	
						C-SIZE		5556		SEE CHART			
												GENERAL MARKET	
						C-SIZE		5556		SEE CHART			
												GENERAL MARKET	
						C-SIZE		5556		SEE CHART			
												GENERAL MARKET	
						C-SIZE		5556		SEE CHART			
												GENERAL MARKET	
						C-SIZE		5556		SEE CHART			
												GENERAL MARKET	
						C-SIZE		5556		SEE CHART			
												GENERAL MARKET	
						C-SIZE		5556		SEE CHART			
												GENERAL MARKET	
						C-SIZE		5556		SEE CHART			
												GENERAL MARKET	
						C-SIZE		5556		SEE CHART			
												GENERAL MARKET	
						C-SIZE		5556		SEE CHART			
												GENERAL MARKET	
						C-SIZE		5556		SEE CHART			
												GENERAL MARKET	
						C-SIZE		5556		SEE CHART			
												GENERAL MARKET	
						C-SIZE		5556		SEE CHART			
												GENERAL MARKET	
						C-SIZE		5556		SEE CHART			
												GENERAL MARKET	
						C-SIZE		5556		SEE CHART			
												GENERAL MARKET	
						C-SIZE		5556		SEE CHART			
												GENERAL MARKET	
						C-SIZE		5556		SEE CHART			
												GENERAL MARKET	
						C-SIZE		5556		SEE CHART			
												GENERAL MARKET	
						C-SIZE		5556		SEE CHART			
												GENERAL MARKET	
						C-SIZE		5556		SEE CHART			
												GENERAL MARKET	
						C-SIZE		5556		SEE CHART			
												GENERAL MARKET	
						C-SIZE		5556		SEE CHART			
												GENERAL MARKET	
						C-SIZE		5556		SEE CHART			
												GENERAL MARKET	
						C-SIZE		5556		SEE CHART			
												GENERAL MARKET	
						C-SIZE		5556		SEE CHART			
												GENERAL MARKET	
						C-SIZE		5556		SEE CHART			
												GENERAL MARKET	
						C-SIZE		5556		SEE CHART			
												GENERAL MARKET	
						C-SIZE		5556		SEE CHART			
												GENERAL MARKET	
						C-SIZE		5556		SEE CHART			
												GENERAL MARKET	
						C-SIZE		5556		SEE CHART			
												GENERAL MARKET	
						C-SIZE		5556		SEE CHART			
												GENERAL MARKET	
						C-SIZE		5556		SEE CHART			
												GENERAL MARKET	
						C-SIZE		5556		SEE CHART			
												GENERAL MARKET	
						C-SIZE		5556		SEE CHART			
												GENERAL MARKET	
						C-SIZE		5556		SEE CHART			
												GENERAL MARKET	
						C-SIZE		5556		SEE CHART			
												GENERAL MARKET	
						C-SIZE		5556		SEE CHART			
												GENERAL MARKET	
						C-SIZE		5556		SEE CHART			
												GENERAL MARKET	
						C-SIZE		5556		SEE CHART			
												GENERAL MARKET	
						C-SIZE		5556		SEE CHART			
												GENERAL MARKET	
						C-SIZE		5556		SEE CHART			
												GENERAL MARKET	
						C-SIZE		5556		SEE CHART			
												GENERAL MARKET	
						C-SIZE		5556		SEE CHART			
												GENERAL MARKET	
						C-SIZE		5556		SEE CHART			
												GENERAL MARKET	
						C-SIZE		5556		SEE CHART			
												GENERAL MARKET	
						C-SIZE		5556		SEE CHART			
												GENERAL MARKET	
						C-SIZE		5556		SEE CHART			
												GENERAL MARKET	
						C-SIZE		5556		SEE CHART			
												GENERAL MARKET	
						C-SIZE		5556		SEE CHART			
												GENERAL MARKET	
						C-SIZE		5556		SEE CHART			
												GENERAL MARKET	
						C-SIZE		5556		SEE CHART			
												GENERAL MARKET	
						C-SIZE		5556		SEE CHART			
												GENERAL MARKET	
						C-SIZE		5556		SEE CHART			
												GENERAL MARKET	
						C-SIZE		5556		SEE CHART			
												GENERAL MARKET	
						C-SIZE		5556		SEE CHART			
												GENERAL MARKET	
						C-SIZE		5556		SEE CHART			
												GENERAL MARKET	
						C-SIZE		5556		SEE CHART			
												GENERAL MARKET	
						C-SIZE		5556		SEE CHART			
												GENERAL MARKET	
						C-SIZE		5556		SEE CHART			
												GENERAL MARKET	
						C-SIZE		5556		SEE CHART			
												GENERAL MARKET	
						C-SIZE		5556		SEE CHART			
												GENERAL MARKET	
						C-SIZE		5556		SEE CHART			
												GENERAL MARKET	
						C-SIZE		5556		SEE CHART			
												GENERAL MARKET	
						C-SIZE		5556		SEE CHART			
												GENERAL MARKET	
						C-SIZE		5556		SEE CHART			
												GENERAL MARKET	
						C-SIZE		5556		SEE CHART			
												GENERAL MARKET	
						C-SIZE		5556		SEE CHART			
												GENERAL MARKET	
						C-SIZE		5556		SEE CHART			
												GENERAL MARKET	
						C-SIZE		555					

DOCUMENT STATUS	P1	RELEASE DATE	2024/10/18	06:00:04
-----------------	----	--------------	------------	----------

H

G

F

E

D

C

B

A

	12	11	10	9	8	7	6	5	4	3	2	1				
PHOS BRONZE	SELECTIVE GOLD (0.76um)/30m. in. MIN. AND SELECTIVE TIN (2.54um)/100m.i. MIN. OVER NICKEL (1.27um)/50m. in. MIN. OVERALL				<div><div>(0.9)</div><div>.035</div></div>	<div><div>(4.5)</div><div>.177</div></div>	<div><div>(3.6)</div><div>.142</div></div>	<div><div>(0.6)</div><div>.024</div></div>	<div><div>(2.7)</div><div>.106</div></div>	<div><div>(2.3)</div><div>.091</div></div>	<div><div>∅</div><div><div>(3.1)</div><div>.122</div></div>MAX.</div>	# 16	<div><div>▲</div><div>-0186</div></div>		<div><div>PBGS3PL</div></div>	LOOSE
					<div><div>(0.6)</div><div>.024</div></div>	<div><div>(2.3)</div><div>.091</div></div>	<div><div>(2.3)</div><div>.091</div></div>	<div><div>(0.4)</div><div>.016</div></div>	<div><div>(1.65)</div><div>.065</div></div>	<div><div>(1.8)</div><div>.071</div></div>	<div><div>∅</div><div><div>(0.9-1.8)</div><div>.035-.071</div></div></div>	# 22-28	<div><div></div><div>-0185</div></div>		<div><div>PBGS3P</div></div>	CHAIN
					<div><div>(0.9)</div><div>.035</div></div>	<div><div>(4.5)</div><div>.177</div></div>	<div><div>(3.6)</div><div>.142</div></div>	<div><div>(0.5)</div><div>.020</div></div>	<div><div>(2.3)</div><div>.091</div></div>	<div><div>(1.9)</div><div>.075</div></div>	<div><div>∅</div><div><div>(1.3-3.1)</div><div>.051-.122</div></div></div>	# 18-24	<div><div></div><div>-0184</div></div>		<div><div>PBGS2PL</div></div>	LOOSE
					<div><div>(0.6)</div><div>.024</div></div>	<div><div>(2.3)</div><div>.091</div></div>	<div><div>(2.3)</div><div>.091</div></div>	<div><div>(0.4)</div><div>.016</div></div>	<div><div>(1.65)</div><div>.065</div></div>	<div><div>(1.8)</div><div>.071</div></div>	<div><div>∅</div><div><div>(0.9-1.8)</div><div>.035-.071</div></div></div>	# 22-28	<div><div></div><div>-0183</div></div>		<div><div>PBGS2P</div></div>	CHAIN
BRASS	SELECTIVE GOLD (1.27μm)/50m. in. MIN. AND SELECTIVE TIN (2.54 μm)/ 100 m.in. MIN. OVER NICKEL (1.27μm)/50m. in. MIN. OVERALL				<div><div>(0.9)</div><div>.035</div></div>	<div><div>(4.5)</div><div>.177</div></div>	<div><div>(3.6)</div><div>.142</div></div>	<div><div>(0.6)</div><div>.024</div></div>	<div><div>(2.7)</div><div>.106</div></div>	<div><div>(2.3)</div><div>.091</div></div>	<div><div>∅</div><div><div>(3.1)</div><div>.122</div></div>MAX.</div>	# 16	<div><div>▲</div><div>-0142</div></div>		<div><div>GS9L</div></div>	LOOSE
					<div><div>(0.6)</div><div>.024</div></div>	<div><div>(2.3)</div><div>.091</div></div>	<div><div>(2.3)</div><div>.091</div></div>	<div><div>(0.4)</div><div>.016</div></div>	<div><div>(1.65)</div><div>.065</div></div>	<div><div>(1.8)</div><div>.071</div></div>	<div><div>∅</div><div><div>(0.9-1.8)</div><div>.035-.071</div></div></div>	# 22-28	<div><div></div><div>-0141</div></div>		<div><div>GS9</div></div>	CHAIN
					<div><div>(0.9)</div><div>.035</div></div>	<div><div>(4.5)</div><div>.177</div></div>	<div><div>(3.6)</div><div>.142</div></div>	<div><div>(0.5)</div><div>.020</div></div>	<div><div>(2.3)</div><div>.091</div></div>	<div><div>(1.9)</div><div>.075</div></div>	<div><div>∅</div><div><div>(1.3-3.1)</div><div>.051-.122</div></div></div>	# 18-24	<div><div>▼</div><div>-0140</div></div>		<div><div>GS8L</div></div>	LOOSE
					<div><div>(0.6)</div><div>.024</div></div>	<div><div>(2.3)</div><div>.091</div></div>	<div><div>(2.3)</div><div>.091</div></div>	<div><div>(0.4)</div><div>.016</div></div>	<div><div>(1.65)</div><div>.065</div></div>	<div><div>(1.8)</div><div>.071</div></div>	<div><div>∅</div><div><div>(0.9-1.8)</div><div>.035-.071</div></div></div>	# 22-28	<div><div></div><div>39-00-0139</div></div>		<div><div>GS8</div></div>	CHAIN
	SELECTIVE GOLD (0.38um)/15m. in. MIN. AND SELECTIVE TIN (2.54 μm)/ 100 m.in. MIN. OVER NICKEL (1.27μm)/50m. in. MIN. OVERALL				<div><div>(0.9)</div><div>.035</div></div>	<div><div>(4.5)</div><div>.177</div></div>	<div><div>(3.6)</div><div>.142</div></div>	<div><div>(0.6)</div><div>.024</div></div>	<div><div>(2.7)</div><div>.106</div></div>	<div><div>(2.3)</div><div>.091</div></div>	<div><div>∅</div><div><div>(3.1)</div><div>.122</div></div>MAX.</div>	# 16	<div><div></div><div>40-13-0852</div></div>		<div><div>GS7L</div></div>	LOOSE
					<div><div>(0.6)</div><div>.024</div></div>	<div><div>(2.3)</div><div>.091</div></div>	<div><div>(2.3)</div><div>.091</div></div>	<div><div>(0.4)</div><div>.016</div></div>	<div><div>(1.65)</div><div>.065</div></div>	<div><div>(1.8)</div><div>.071</div></div>	<div><div>∅</div><div><div>(0.9-1.8)</div><div>.035-.071</div></div></div>	# 22-28	<div><div></div><div>40-13-0851</div></div>		<div><div>GS7</div></div>	CHAIN
					<div><div>(0.9)</div><div>.035</div></div>	<div><div>(4.5)</div><div>.177</div></div>	<div><div>(3.6)</div><div>.142</div></div>	<div><div>(0.5)</div><div>.020</div></div>	<div><div>(2.3)</div><div>.091</div></div>	<div><div>(1.9)</div><div>.075</div></div>	<div><div>∅</div><div><div>(1.3-3.1)</div><div>.051-.122</div></div></div>	# 18-24	<div><div></div><div>39-00-0094</div></div>		<div><div>GS6L</div></div>	LOOSE
					<div><div>(0.6)</div><div>.024</div></div>	<div><div>(2.3)</div><div>.091</div></div>	<div><div>(2.3)</div><div>.091</div></div>	<div><div>(0.4)</div><div>.016</div></div>	<div><div>(1.65)</div><div>.065</div></div>	<div><div>(1.8)</div><div>.071</div></div>	<div><div>∅</div><div><div>(0.9-1.8)</div><div>.035-.071</div></div></div>	# 22-28	<div><div></div><div>▲ -0093</div></div>		<div><div>GS6</div></div>	CHAIN
	SELECTIVE GOLD (0.76um)/30m. in. MIN. AND SELECTIVE TIN (2.54um)/100m.i. MIN. OVERALL				<div><div>(0.9)</div><div>.035</div></div>	<div><div>(4.5)</div><div>.177</div></div>	<div><div>(3.6)</div><div>.142</div></div>	<div><div>(0.6)</div><div>.024</div></div>	<div><div>(2.7)</div><div>.106</div></div>	<div><div>(2.3)</div><div>.091</div></div>	<div><div>∅</div><div><div>(3.1)</div><div>.122</div></div>MAX.</div>	# 16	<div><div></div><div>-0092</div></div>		<div><div>GS5L</div></div>	LOOSE
					<div><div>(0.6)</div><div>.024</div></div>	<div><div>(2.3)</div><div>.091</div></div>	<div><div>(2.3)</div><div>.091</div></div>	<div><div>(0.4)</div><div>.016</div></div>	<div><div>(1.65)</div><div>.065</div></div>	<div><div>(1.8)</div><div>.071</div></div>	<div><div>∅</div><div><div>(0.9-1.8)</div><div>.035-.071</div></div></div>	# 22-28	<div><div></div><div>-0091</div></div>		<div><div>GS5</div></div>	CHAIN
					<div><div>(0.9)</div><div>.035</div></div>	<div><div>(4.5)</div><div>.177</div></div>	<div><div>(3.6)</div><div>.142</div></div>	<div><div>(0.5)</div><div>.020</div></div>	<div><div>(2.3)</div><div>.091</div></div>	<div><div>(1.9)</div><div>.075</div></div>	<div><div>∅</div><div><div>(1.3-3.1)</div><div>.051-.122</div></div></div>	# 18-24	<div><div></div><div>-0074</div></div>		<div><div>GS4L</div></div>	LOOSE
					<div><div>(0.6)</div><div>.024</div></div>	<div><div>(2.3)</div><div>.091</div></div>	<div><div>(2.3)</div><div>.091</div></div>	<div><div>(0.4)</div><div>.016</div></div>	<div><div>(1.65)</div><div>.065</div></div>	<div><div>(1.8)</div><div>.071</div></div>	<div><div>∅</div><div><div>(0.9-1.8)</div><div>.035-.071</div></div></div>	# 22-28	<div><div></div><div>-0073</div></div>		<div><div>GS4</div></div>	CHAIN
MATERIAL	FINISH				<div><div>(0.9)</div><div>.035</div></div>	<div><div>(4.5)</div><div>.177</div></div>	<div><div>(3.6)</div><div>.142</div></div>	<div><div>(0.6)</div><div>.024</div></div>	<div><div>(2.7)</div><div>.106</div></div>	<div><div>(2.3)</div><div>.091</div></div>	<div><div>∅</div><div><div>(3.1)</div><div>.122</div></div>MAX.</div>	# 16	<div><div></div><div>-0090</div></div>		<div><div>GS3L</div></div>	LOOSE
					<div><div>(0.6)</div><div>.024</div></div>	<div><div>(2.3)</div><div>.091</div></div>	<div><div>(2.3)</div><div>.091</div></div>	<div><div>(0.4)</div><div>.016</div></div>	<div><div>(1.65)</div><div>.065</div></div>	<div><div>(1.8)</div><div>.071</div></div>	<div><div>∅</div><div><div>(0.9-1.8)</div><div>.035-.071</div></div></div>	# 22-28	<div><div></div><div>-0089</div></div>		<div><div>GS3</div></div>	CHAIN
					<div><div>(0.9)</div><div>.035</div></div>	<div><div>(4.5)</div><div>.177</div></div>	<div><div>(3.6)</div><div>.142</div></div>	<div><div>(0.5)</div><div>.020</div></div>	<div><div>(2.3)</div><div>.091</div></div>	<div><div>(1.9)</div><div>.075</div></div>	<div><div>∅</div><div><div>(1.3-3.1)</div><div>.051-.122</div></div></div>	# 18-24	<div><div></div><div>-0435</div></div>		<div><div>GS2L7F</div></div>	LOOSE
					<div><div>(0.6)</div><div>.024</div></div>	<div><div>(2.3)</div><div>.091</div></div>	<div><div>(2.3)</div><div>.091</div></div>	<div><div>(0.4)</div><div>.016</div></div>	<div><div>(1.65)</div><div>.065</div></div>	<div><div>(1.8)</div><div>.071</div></div>	<div><div>∅</div><div><div>(0.9-1.8)</div><div>.035-.071</div></div></div>	# 22-28	<div><div></div><div>-0434</div></div>		<div><div>GS27F</div></div>	CHAIN
					<div><div>(0.9)</div><div>.035</div></div>	<div><div>(4.5)</div><div>.177</div></div>	<div><div>(3.6)</div><div>.142</div></div>	<div><div>(0.5)</div><div>.020</div></div>	<div><div>(2.3)</div><div>.091</div></div>	<div><div>(1.9)</div><div>.075</div></div>	<div><div>∅</div><div><div>(1.3-3.1)</div><div>.051-.122</div></div></div>	# 18-24	<div><div>▼</div><div>-0429</div></div>	<div><div>▼</div><div>GSL7F</div></div>	LOOSE	
													39-00-0428	5556 GS7F	CHAIN	
					F	E	D	C	B	A	INS. RANGE	WIRE RANGE	EDP NO.	ENG. NO.	FORM	

<