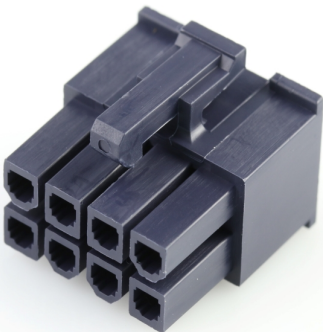




Part Number : [39013085](#)
Product Description : Mini-Fit Jr. Receptacle
Housing, Dual Row, 8 Circuits, UL 94V-2, Black
Series Number : [5557](#)
Status : Active
Product Category : Connector Housings
Engineering Number : [5557-08R-BL](#)



Documents & Resources

Drawings

[039013085_sd.pdf](#)
[PK-5557-002-000.pdf](#)

3D Models and Design Files

[039013085_stp.zip](#)

Specifications

[55560001-AS-000.pdf](#)
[55560002-AS-000.pdf](#)
[PS-45750-001-001.pdf](#)
[55560002-PS-CH-000.pdf](#)
[55560002-PS-ES-000.pdf](#)
[55560002-PS-SK-000.pdf](#)
[PS-5556-001-001.pdf](#)
[PS-5556-002-001.pdf](#)
[55560010-TS-000.pdf](#)
[TS-5556-002-001.pdf](#)

Product Environment Compliance

Compliance

GADSL/IMDS	Not Relevant
China RoHS	
EU ELV	Not Relevant
Low-Halogen Status	Low-Halogen per IEC 61249-2-21

REACH SVHC	Not Contained per D(2024)7663-DC (21 Jan 2025)
EU RoHS	Compliant per EU 2015/863

Multiple Part Product Compliance Statements

- Eu RoHS
- REACH SVHC
- Low-Halogen

Multiple Part Industry Compliance Documents

- IPC 1752A Class C
- IPC 1752A Class D
- Molex Product Compliance Declaration
- IEC-62474
- chemSHERPA (xml)

EU RoHS Certificate of Compliance

Part Details

General

Status	Active
Category	Connector Housings
Series	5557
Description	Mini-Fit Jr. Receptacle Housing, Dual Row, 8 Circuits, UL 94V-2, Black
Application	Power, Wire-to-Board, Wire-to-Wire
Product Name	Mini-Fit Jr.
UPC	800754239561

Agency

CSA	LR19980
UL	E29179

Physical

Breakaway	No
Circuits (maximum)	8
Color - Resin	Black
Flammability	94V-2
Gender	Receptacle

Glow-Wire Capable	No
Keying to Mating Part	None
Lock to Mating Part	Yes
Material - Resin	Nylon
Net Weight	1.714/g
Number of Rows	2
Packaging Type	Bag
Panel Mount	No
Pitch - Mating Interface	4.20mm
Pitch - Termination Interface	4.20mm
Polarized to Mating Part	Yes
Stackable	No
Temperature Range - Operating	-40° to +105°C

Solder Process Data

Lead-Free Process Capability	N/A
------------------------------	-----

Mates With / Use With

Mates with Part(s)

Description	Part Number
Mini-Fit TPA2 Plug Housing, 4.20mm Pitch, Dual Row, UL 94V-0, Low-Halogen, 8 Circuits	<u>1727620008</u>
Mini-Fit TPA2 Plug Housing, 4.20mm Pitch, Dual Row, UL 94V-0, Low-Halogen, 8 Circuits, Panel Mount	<u>1727670008</u>
Mini-Fit TPA2 Plug Housing, 4.20mm Pitch, Dual Row, UL 94V-2, Glow-Wire Capable, 8 Circuits, Panel Mount	<u>1727670108</u>
Mini-Fit TPA2 Plug Housing, 4.20mm Pitch, Dual Row, UL 94V-0, Low-Halogen, 8 Circuits, Old Panel Mount Style	<u>1727671008</u>
Mini-Fit TPA2 Plug Housing, 4.20mm Pitch, Dual Row, UL 94V-2, Glow-Wire Capable, 8 Circuits, Old Panel Mount Style	<u>1727671108</u>
Mini-Fit BMI Right-Angle Dual Row Headers	<u>42404</u>

Mini-Fit BMI Vertical Dual Row Headers	<u>42440</u>
Mini-Fit BMI Right-Angle Dual Row Headers	<u>43810</u>
Mini-Fit BMI Vertical Dual Row Headers	<u>44068</u>
Mini-Fit Jr. Dual Row Test Plugs	<u>44281</u>
Mini-Fit Jr. Plug Housings	<u>5559</u>
Mini-Fit Jr. Vertical Headers	<u>5566</u>
Mini-Fit Jr. Right-Angle Headers	<u>5569</u>
Mini-Fit Jr. Dual Row Headers	<u>87427</u>

Use with Part(s)

Description	Part Number
Pre-Crimped Lead Mini-Fit Female-to-Mini-Fit Female, Tin (Sn) Plating, 150.00mm Length, 18 AWG, Red	<u>797580001</u>
Pre-Crimped Lead Mini-Fit Female-to-Mini-Fit Female, Tin (Sn) Plating, 300.00mm Length, 18 AWG, Red	<u>797580009</u>
Mini-Fit Female Crimp Terminals	<u>5556</u>
Mini-Fit Plus Female Crimp Terminals	<u>45750</u>
Mini-Fit Jr. Hermaphroditic Backshells	<u>204723</u>