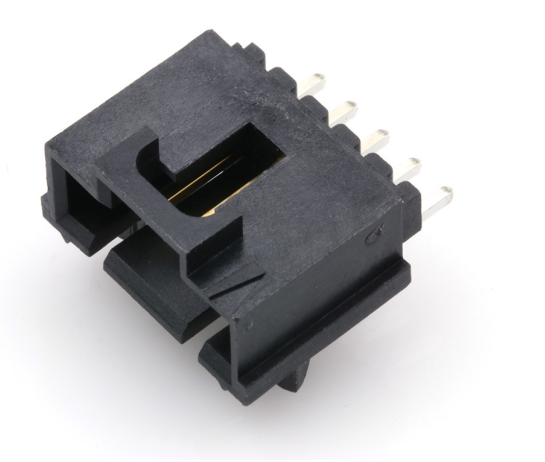




Part Number : [15913053](#)
Product Description : 2.54mm Pitch SL Wire-to-Board Header, Low Profile, Surface Mount, Single Row, Right-Angle, 3.05mm Pocket, Shrouded, with Press-fit Plastic Peg, 5 Circuits, 0.76µm Gold (Au) Selective Plating, Tin (Sn) PC Tail Plating
Series Number : 70634
Status : Active
Product Category : PCB Headers and Receptacles
Engineering Number : 70634-0074



Documents & Resources


Drawings
[015913053_sd.pdf](#)
[PK-70873-016-001.pdf](#)

3D Models and Design Files
[015913053_stp.zip](#)

Specifications
[PS-70400-001.pdf](#)
[PS-70541-001.pdf](#)
[TS-70541-100-001.pdf](#)

Product Environment Compliance

Compliance

GADSL/IMDS	Not Relevant
China RoHS	
EU ELV	Not Relevant
Low-Halogen Status	Not Low-Halogen per IEC 61249-2-21
REACH SVHC	Not Contained per D(2024)4144-DC (27 June 2024)
EU RoHS	Compliant per EU 2015/863

Multiple Part Product Compliance Statements
- Eu RoHS

- REACH SVHC

- Low-Halogen

Multiple Part Industry Compliance Documents

- IPC 1752A Class C

- IPC 1752A Class D

- Molex Product Compliance Declaration

- IEC-62474

- chemSHERPA (xml)

EU RoHS Certificate of Compliance

Part Details

General

Status	Active
Category	PCB Headers and Receptacles
Series	70634
Description	2.54mm Pitch SL Wire-to-Board Header, Low Profile, Surface Mount, Single Row, Right-Angle, 3.05mm Pocket, Shrouded, with Press-fit Plastic Peg, 5 Circuits, 0.76µm Gold (Au) Selective Plating, Tin (Sn) PC Tail Plating
Application	Signal, Wire-to-Board
Component Type	PCB Header
Product Name	SL
UPC	800753772175

Agency

CSA	LR19980
UL	E29179

Electrical

Current - Maximum per Contact	3.0A
Voltage - Maximum	250V

Physical

Breakaway	No
Circuits (Loaded)	5

Circuits (maximum)	5
Color - Resin	Black
Durability (mating cycles max)	50
Flammability	94V-0
Glow-Wire Capable	No
Lock to Mating Part	Yes
Material - Metal	Brass, Phosphor Bronze
Material - Plating Mating	Gold
Material - Plating Termination	Tin
Material - Resin	High Temperature Thermoplastic
Net Weight	1.298/g
Number of Rows	1
Orientation	Right Angle
Packaging Type	Tube
PCB Locator	Yes
PCB Retention	Yes
PCB Thickness - Recommended	1.60mm
Pitch - Mating Interface	2.54mm
Plating min - Mating	0.762µm
Plating min - Termination	1.905µm
Polarized to Mating Part	Yes
Polarized to PCB	Yes
Shrouded	Fully
Stackable	No
Temperature Range - Operating	-40° to +105°C
Termination Interface Style	Surface Mount

Solder Process Data

Lead-Free Process Capability	REFLOW
Max-Temp	260

Mates With / Use With

Mates with Part(s)

Description	Part Number
-------------	-------------

SL Single Row Crimp Housings and CPA Retainers	<u>70066</u>
SL Single Row Female Insulation Displacement Connector Assemblies	<u>70400</u>
SL Single Row Female Receptacles	<u>70430</u>

This document was generated on Feb 27, 2025