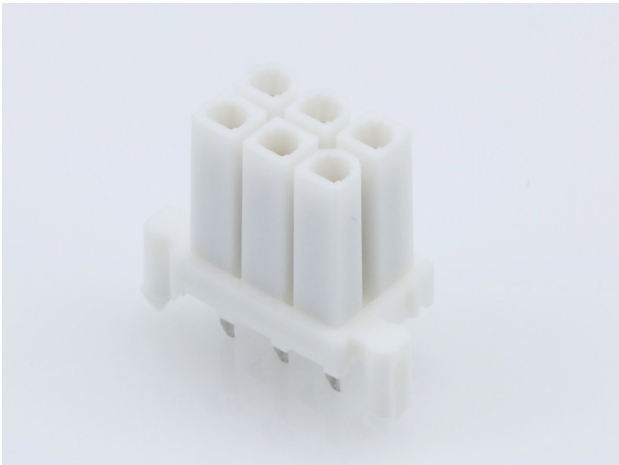




Part Number : [15247063](#)
Product Description : Mini-Fit BMI Receptacle Header, 4.20mm Pitch, Dual Row, Vertical, with Snap-In Plastic Pegs, 0.80µm Gold (Au), UL 94V-0, 6 Circuits
Series Number : 42385
Status : Active
Product Category : PCB Headers and Receptacles
Engineering Number : 42385-06B2



Documents & Resources

Drawings

[015247063_sd.pdf](#)
[PK-42385-999-001.pdf](#)

3D Models and Design Files


[015247063_stp.zip](#)
[SYM-A42385-06XX-001.zip](#)

Specifications

[55560002-PS-CH-000.pdf](#)
[55560002-PS-ES-000.pdf](#)
[55560002-PS-SK-000.pdf](#)
[PS-5556-002-001.pdf](#)
[423850000-TS-000.pdf](#)
[TS-5556-002-001.pdf](#)

Product Environment Compliance

Compliance

GADSL/IMDS	Compliant with Exemption 44; 34; 33
China RoHS	
EU ELV	Not Relevant
Low-Halogen Status	Low-Halogen per IEC 61249-2-21
REACH SVHC	Not Contained per D(2024)6225-DC (07 Nov 2024)
EU RoHS	Compliant per EU 2015/863

Multiple Part Product Compliance Statements

- Eu RoHS
- REACH SVHC
- Low-Halogen

Multiple Part Industry Compliance Documents

- IPC 1752A Class C
- IPC 1752A Class D
- Molex Product Compliance Declaration
- IEC-62474
- chemSHERPA (xml)

EU RoHS Certificate of Compliance

Part Details

General

Status	Active
Category	PCB Headers and Receptacles
Series	42385
Description	Mini-Fit BMI Receptacle Header, 4.20mm Pitch, Dual Row, Vertical, with Snap-In Plastic Pegs, 0.80µm Gold (Au), UL 94V-0, 6 Circuits
Application	Board-to-Board, Power, Wire-to-Board
Comments	Solder Type, With Pegs
Component Type	PCB Receptacle
Product Name	Mini-Fit BMI
UPC	800754254373

Agency

CSA	LR19980
UL	E29179

Electrical

Current - Maximum per Contact	9.0A
Grounding to PCB	No
Voltage - Maximum	600V AC (RMS)/DC

Physical

Circuits (Loaded)	6
Circuits (maximum)	6
Color - Resin	Natural (White)
Durability (mating cycles max)	30
Flammability	94V-2
Glow-Wire Capable	No
Guide to Mating Part	Yes
Keying to Mating Part	None
Lock to Mating Part	None
Material - Metal	Brass
Material - Plating Mating	Gold
Material - Resin	Nylon
Net Weight	1.299/g
Number of Rows	2
Orientation	Vertical
Packaging Type	Tray
PCB Locator	Yes
PCB Retention	Yes
PCB Thickness - Recommended	1.00mm
Pitch - Mating Interface	4.20mm
Pitch - Termination Interface	4.20mm
Polarized to Mating Part	Yes
Polarized to PCB	Yes
Temperature Range - Operating	-40° to +105°C
Termination Interface Style	Through Hole

Solder Process Data

Max-Duration	5
Lead-Free Process Capability	WAVE
Max-Cycle	1
Max-Temp	240

Mates With / Use With

Mates with Part(s)

Description	Part Number
Mini-Fit BMI Dual Row Plug Housings	<u>42475</u>
Mini-Fit BMI Right-Angle Dual Row Headers	<u>42404</u>
Mini-Fit BMI Right-Angle Dual Row Headers	<u>43810</u>
Mini-Fit BMI Vertical Dual Row Headers	<u>42440</u>
Mini-Fit BMI Vertical Dual Row Headers	<u>43879</u>
Mini-Fit BMI Vertical Dual Row Headers	<u>44068</u>