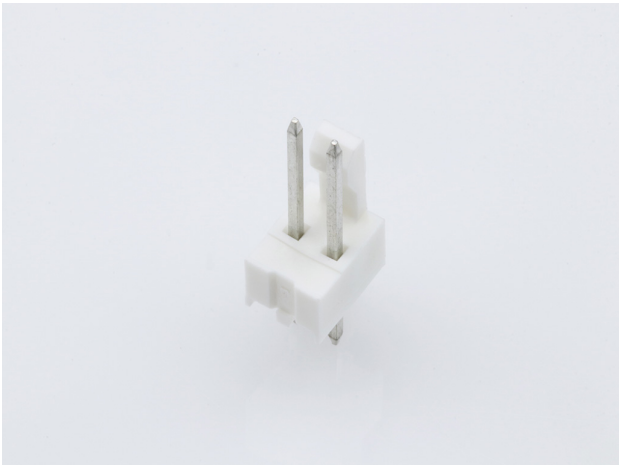




**Part Number :** [22232021](#)  
**Product Description :** KK 254 Solid Header, Vertical, with Friction Lock, 2 Circuits, Tin (Sn) Plating  
**Series Number :** 6373  
**Status :** Active  
**Product Category :** PCB Headers and Receptacles  
**Engineering Number :** A-6373-02A222



Documents & Resources

Drawings

[022232021\\_sd.pdf](#)  
[PK-6373-001-000.pdf](#)

3D Models and Design Files


[022232021\\_stp.zip](#)  
[SYM-22-23-2021-001.zip](#)

Specifications

[PS-10-07-001.pdf](#)

Product Environment Compliance

Compliance

GADSL/IMDS	Compliant with Exemption 44; 33
China RoHS	
EU ELV	Not Relevant
Low-Halogen Status	Low-Halogen per IEC 61249-2-21
REACH SVHC	Not Contained per D(2024)6225-DC (07 Nov 2024)
EU RoHS	Compliant per EU 2015/863

Multiple Part Product Compliance Statements

- Eu RoHS
- REACH SVHC

- Low-Halogen

#### Multiple Part Industry Compliance Documents

- IPC 1752A Class C
- IPC 1752A Class D
- Molex Product Compliance Declaration
- IEC-62474
- chemSHERPA (xml)

#### EU RoHS Certificate of Compliance

---

## Part Details

### General

Status	Active
Category	PCB Headers and Receptacles
Series	6373
Description	KK 254 Solid Header, Vertical, with Friction Lock, 2 Circuits, Tin (Sn) Plating
Application	Signal, Wire-to-Board
Component Type	PCB Header
Product Name	KK 254
UPC	191128090377

### Agency

CSA	LR19980
UL	E29179

### Electrical

Current - Maximum per Contact	4.0A
Voltage - Maximum	500V

### Physical

Breakaway	No
Circuits (Loaded)	2
Circuits (maximum)	2
Color - Resin	Natural (White)
Durability (mating cycles max)	25

First Mate / Last Break	No
Flammability	94V-0
Glow-Wire Capable	No
Guide to Mating Part	No
Lock to Mating Part	Yes
Material - Metal	Brass
Material - Plating Mating	Tin
Material - Resin	Nylon
Net Weight	0.222/g
Number of Rows	1
Orientation	Vertical
Packaging Type	Bag
PC Tail Length	3.56mm
PCB Locator	No
PCB Retention	None
PCB Thickness - Recommended	1.60mm
Pitch - Mating Interface	2.54mm
Pitch - Termination Interface	2.54mm
Polarized to Mating Part	Yes
Polarized to PCB	No
Shrouded	Partial
Stackable	No
Temperature Range - Operating	See Product Specification
Termination Interface Style	Through Hole

## Solder Process Data

Max-Duration	5
Lead-Free Process Capability	WAVE
Max-Cycle	1
Max-Temp	235

---

## Mates With / Use With

### Mates with Part(s)

Description	Part Number
-------------	-------------

KK 254 Single Row Crimp Housings	<u>2695</u>
KK 254 PC Board Connector	<u>4455</u>
KK 254 Receptacle Housings	<u>7880</u>

---

This document was generated on Mar 12, 2025