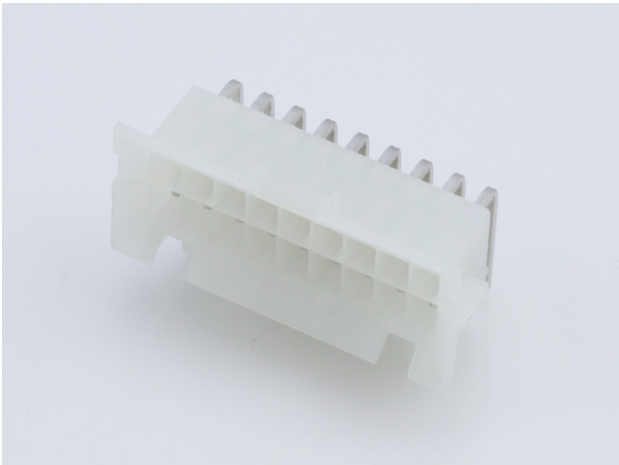




**Part Number :** [15246180](#)  
**Product Description :** Mini-Fit BMI Header, Dual Row, Right-Angle, with Snap-in Plastic Peg PCB Lock, 18 Circuits, PA Polyamide Nylon 6/6, UL 94V-2, with Tin (Sn) Plating  
**Series Number :** [42404](#)  
**Status :** Active  
**Product Category :** PCB Headers and Receptacles  
**Engineering Number :** [A-42404-18A1](#)



Documents & Resources

Drawings

[015246180\\_sd.pdf](#)  
[PK-42404-002-001.pdf](#)

3D Models and Design Files


[015246180\\_stp.zip](#)  
[SYM-A42404-18XX-001.zip](#)

Specifications

[424040001-AS-000.pdf](#)  
[PS-45750-001-001.pdf](#)  
[55560002-PS-CH-000.pdf](#)  
[55560002-PS-ES-000.pdf](#)  
[55560002-PS-SK-000.pdf](#)  
[PS-5556-002-001.pdf](#)  
[TS-42404-001-001.pdf](#)  
[TS-5556-002-001.pdf](#)

Product Environment Compliance

Compliance

GADSL/IMDS	Compliant with Exemption 44; 33
China RoHS	
EU ELV	Not Relevant
Low-Halogen Status	Low-Halogen per IEC 61249-2-21
REACH SVHC	Not Contained per D(2024)6225-DC (07 Nov 2024)

EU RoHS	Compliant per EU 2015/863
---------	---------------------------

#### Multiple Part Product Compliance Statements

- Eu RoHS
- REACH SVHC
- Low-Halogen

#### Multiple Part Industry Compliance Documents

- IPC 1752A Class C
- IPC 1752A Class D
- Molex Product Compliance Declaration
- IEC-62474
- chemSHERPA (xml)

#### EU RoHS Certificate of Compliance

---

### Part Details

#### General

Status	Active
Category	PCB Headers and Receptacles
Series	42404
Description	Mini-Fit BMI Header, Dual Row, Right-Angle, with Snap-in Plastic Peg PCB Lock, 18 Circuits, PA Polyamide Nylon 6/6, UL 94V-2, with Tin (Sn) Plating
Application	Board-to-Board, Power, Wire-to-Board
Comments	Current = 13A max. per circuit when header is mated to a receptacle loaded with 45750 Mini-Fit Plus HCS Crimp Terminal Crimped to 16 AWG wire. See Molex product specification PS-45750-001 for additional current de-rating information.
Component Type	PCB Header
Product Name	Mini-Fit BMI
UPC	800753689084

#### Agency

CSA	LR19980
UL	E29179

## Electrical

Current - Maximum per Contact	13.0A
Voltage - Maximum	600V

## Physical

Breakaway	No
Circuits (Loaded)	18
Circuits (maximum)	18
Color - Resin	Natural
Durability (mating cycles max)	30
Flammability	94V-2
Glow-Wire Capable	No
Guide to Mating Part	Yes
Lock to Mating Part	Yes
Material - Metal	Brass
Material - Plating Mating	Tin
Material - Plating Termination	Tin
Material - Resin	Nylon
Net Weight	6.968/g
Number of Rows	2
Orientation	Right Angle
Packaging Type	Tray
PC Tail Length	3.30mm
PCB Locator	Yes
PCB Retention	Yes
PCB Thickness - Recommended	1.80mm
Pitch - Mating Interface	4.20mm
Plating min - Mating	2.540µm
Plating min - Termination	2.540µm
Polarized to Mating Part	Yes
Polarized to PCB	Yes
Shrouded	Partial
Stackable	No
Temperature Range - Operating	-40° to +105°C

Termination Interface Style	Through Hole
-----------------------------	--------------

## Solder Process Data

Max-Duration	5
Lead-Free Process Capability	WAVE
Max-Cycle	1
Max-Temp	240

---

## Mates With / Use With

### Mates with Part(s)

Description	Part Number
Mini-Fit BMI Receptacle Housing, 4.20mm Pitch, Dual Row with Panel Mount Ears, PA Polyamide Nylon 6/6, UL 94V-2, 18 Circuits	<u>15060180</u>
Mini-Fit BMI Receptacle Header, 4.20mm Pitch, Dual Row, Vertical, with Snap-In Plastic Pegs, 2.54µm Tin (Sn), UL 94V-2, 18 Circuits	<u>15247180</u>
Mini-Fit Jr. Receptacle Housing, Dual Row, 18 Circuits, UL 94V-2, Natural	<u>39012180</u>
Mini-Fit HCS Receptacle Header, 4.20mm Pitch, Dual Row, Vertical, Blind Mating, with Snap-in Plastic Pegs, 18 Circuits	<u>444751811</u>