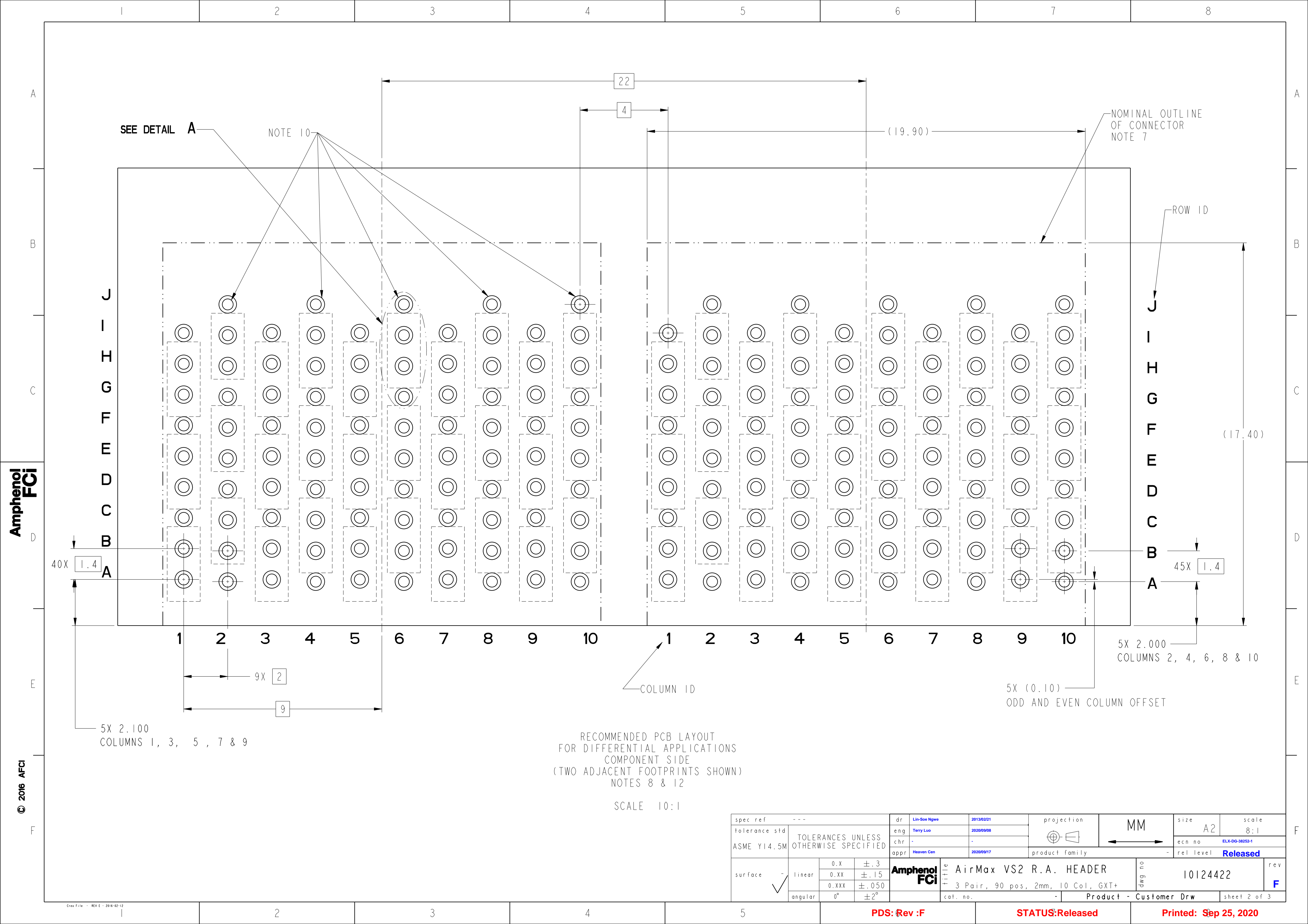


Amphenol
FCi

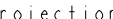
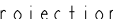

© 2016 AFci

spec ref		---		dr		Lin-See Ngwe		2013/02/21		projection		<div>MM</div>		size		A2		scale		6:1											
tolerance std		TOLERANCES UNLESS OTHERWISE SPECIFIED		eng		Terry Luo		2020/09/08		<div></div>		<div></div>		ecn no		ELX-DG-38252-1															
ASME Y14.5M				chr		-		-						rel level		Released															
				appr		Heaven Cen		2020/09/17		product family		AirMax VSE																			
surface		linear		0.X ±.3		0.XX ±.15		0.XXX ±.050		Amphenol FCI		title		AirMax VS2 R.A. HEADER		dwg no		10124422		rev		F									
		angular		0°		±2°				cat. no.		-		Product - Customer Drw				sheet 1 of 3													



RECOMMENDED PCB LAYOUT
FOR DIFFERENTIAL APPLICATIONS
COMPONENT SIDE
(TWO ADJACENT FOOTPRINTS SHOWN)
NOTES 8 & 12

SCALE 10:1

spec ref		---		dr		Lin-Soe Ngwe		2013/02/21		projection				MM		size		A2		scale		8:1	
tolerance std		ASME Y14.5M		eng		Terry Luo		2020/09/08						ecn no		ELX-DG-38252-1							
TOLERANCES UNLESS OTHERWISE SPECIFIED		chr		-		-		appr						Heaven Cen		2020/09/17		product family		-		rel level	
surface		- ✓		linear		0.X		±.3		Amphenol FCI		title		AirMax VS2 R.A. HEADER		dwg no		10124422		rev		F	
						0.XX		±.15						3 Pair, 90 pos, 2mm, 10 Col, GXT+									
						0.XXX		±.050															
				angular		0°		±2°				cat. no.		-		Product - Customer Drw				sheet 2 of 3			

PDS: Rev :F

STATUS:Released

Printed: Sep 25, 2020

PRODUCT NUMBER	PRESS-FIT TAIL PLATING TYPE	REMARK
10124422-101	TIN/LEAD ALLOY OVER NICKEL	1- SIDE PLATING (CUSTOMER SPECIAL)
10124422-101LF	TIN OVER NICKEL (LEAD FREE)	
10124422-102	TIN/LEAD ALLOY OVER NICKEL	2- SIDE PLATING
10124422-102LF	TIN OVER NICKEL (LEAD FREE)	

- ① - CONNECTOR MATERIALS:
HOUSING: HIGH TEMP THERMOPLASTIC, NATURAL, UL94-V0
IMLA PLASTIC: HIGH TEMP THERMOPLASTIC, BLACK, UL94-V0
CONTACT: COPPER ALLOY
ORGANIZER: HIGH TEMP THERMOPLASTIC, NATURAL, UL94-V0
- 2 - CONTACT PLATING:
SEPARABLE INTERFACE:
PERFORMANCE-BASED PLATING, QUALIFIED TO MEET THE REQUIREMENTS OF FCI PRODUCT SPECIFICATION GS-12-0956 INCLUDING TELCORDIA GR-1217-CORE (NOVEMBER 1995) CENTRAL OFFICE TEST SEQUENCE

PRESS-FIT TAILS: SEE TABLE

3 - PRODUCT SPECIFICATION: GS-12-0956

4 - APPLICATION SPECIFICATION: GS-20-0305

⑤ - PRODUCT MARKING, (PROTOTYPE, PART NUMBER & LOT CODE), ON THIS SURFACE.

⑥ - POSITIONS "F" OF ODD NUMBERED COLUMNS AND POSITIONS "G" OF EVEN NUMBERED COLUMNS CORRESPOND TO EARLY MATE HEADER PINS.

⑦ - CONNECTOR OUTLINE MAY BE SCREEN PRINTED ONTO CUSTOMER PCB TO BE USED AS A GUIDE FOR CONNECTOR PLACEMENT.

⑧ - REFER TO CUSTOMER DRAWING 10104444 FOR INFORMATION ON PCB HOLE DIAMETERS AND PLATING OPTIONS

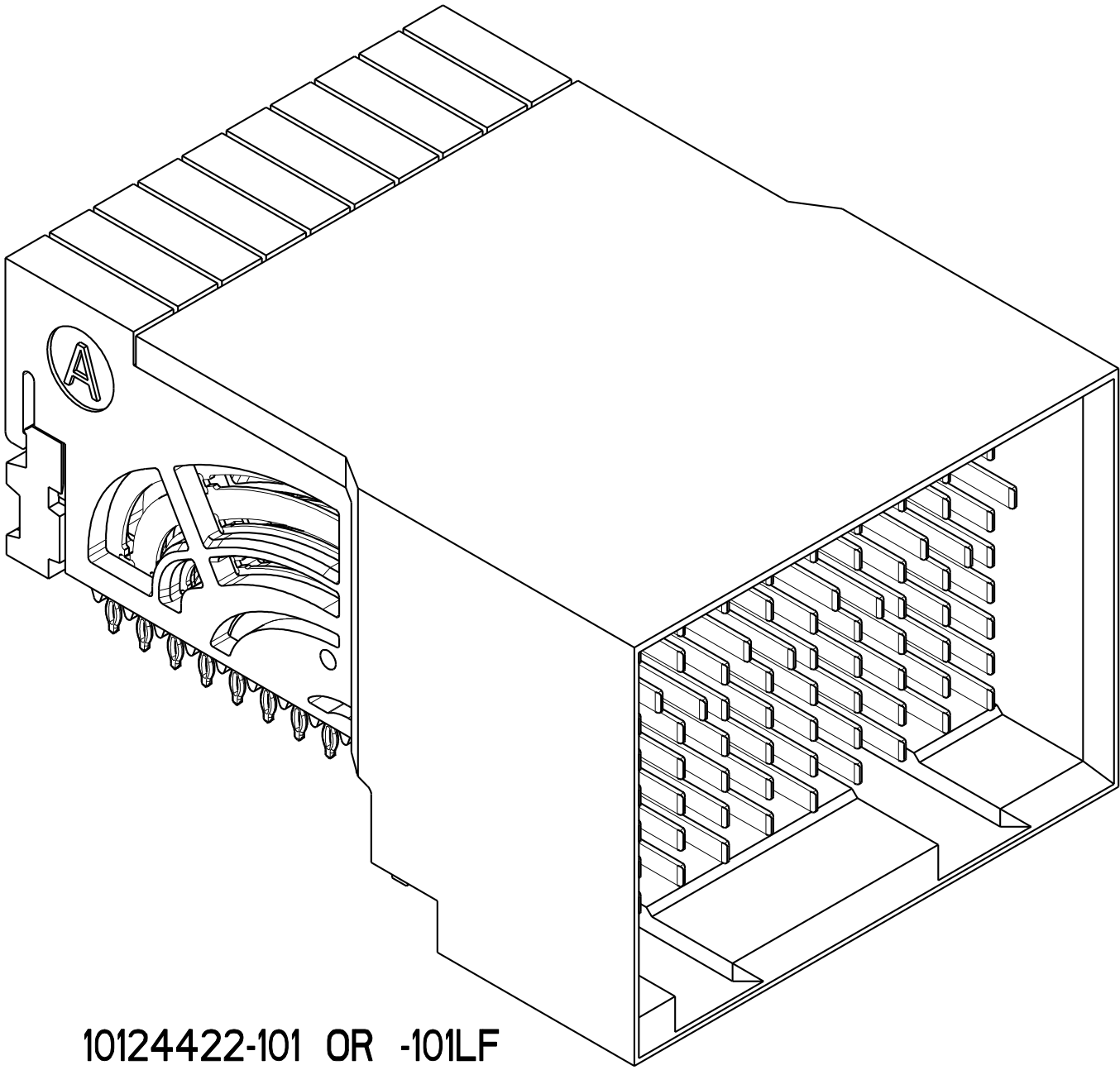
9 - LEAD FREE PRODUCT MEETS THE EUROPEAN UNION DIRECTIVES & OTHER COUNTRY REGULATIONS AS DESCRIBED IN GS-22-008

⑩ - THESE OUTER VIAS (J) ARE OPTIONAL. WHILE NO CONNECTOR EONS ARE PRESSED INTO THESE HOLES WE RECCOMEND (Ø0.500) FINISHED HOLES AT THESE LOCATIONS TO PROVIDE GROUND SYMMETRY THROUGH THE PCB.

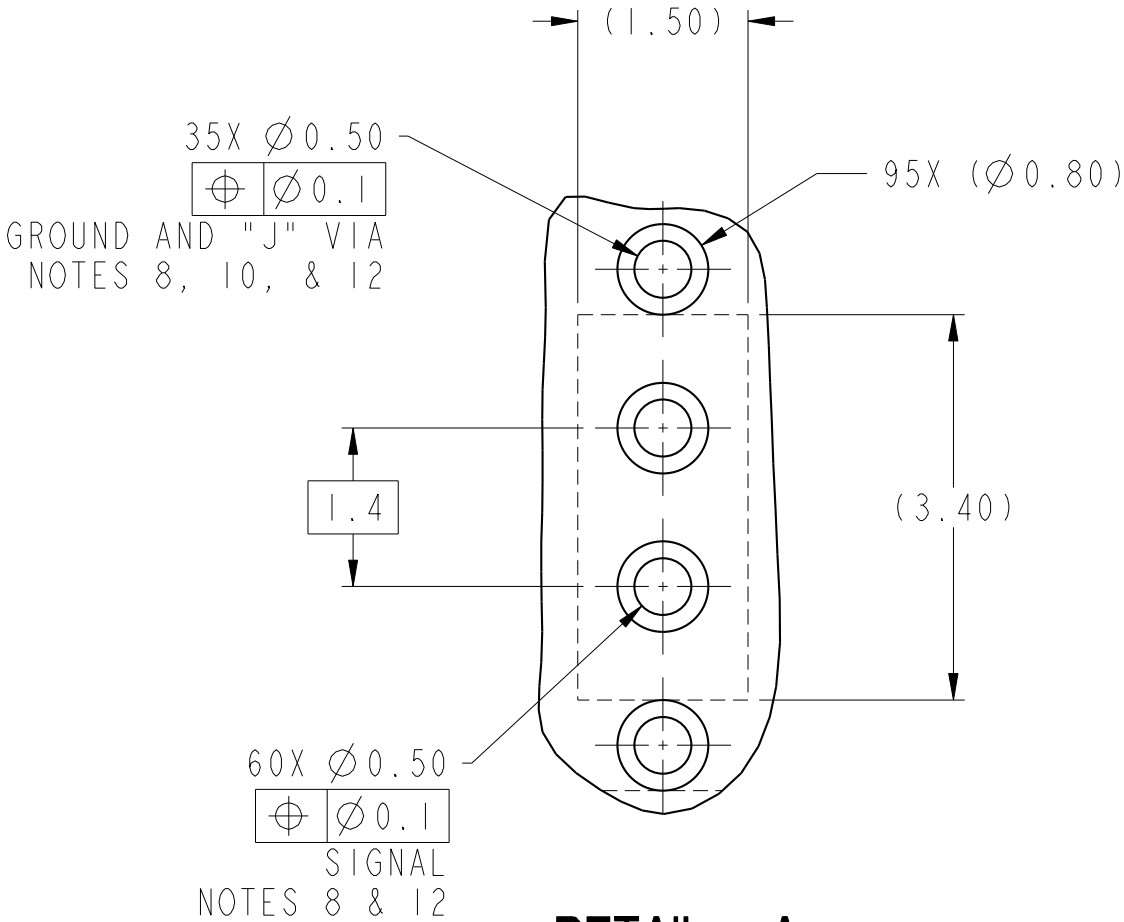
11 - PACKAGING MEETS GS-14-920 LEAD FREE LABELING SPECIFICATION.

⑫ - GROUND CONTACTS (C, F, & I IN ODD COLUMNS AND A, D, & G IN EVEN COLUMNS) REQUIRE (Ø0.50) FINISHED HOLES. SIGNAL LOCATIONS REQUIRE (Ø0.50) FINISHED HOLES



13 - A  SYMBOL WILL BE NEXT TO ANY DIMENSIONS, VIEW OR NOTE, WHICH HAS BEEN MODIFIED WITH THE CURRENT DRAWING REVISION.



10124422-101 OR -101LF



DETAIL A
SCALE 15:1

spec ref ---				dr Lin-Soe Ngwe		2013/02/21		projection		MM		size A2		scale 5:1	
tolerance std				eng Terry Luo		2020/09/08						ecn no ELX-DG-38252-1			
ASME Y14.5M				chr -		2020/09/17		product family		AirMax VSE		rel level		Released	
TOLERANCES UNLESS OTHERWISE SPECIFIED				appr Heaven Cen		2020/09/17									
				Amphenol FCI		title		AirMax VS2 R.A. HEADER		dwg no		10124422		rev F	
surface -		linear		0.X ±.3		0.XX ±.15		0.XXX ±.050							
✓		angular		0°		±2°									
				cat. no.		-		Product - Customer Drw				sheet 3 of 3			