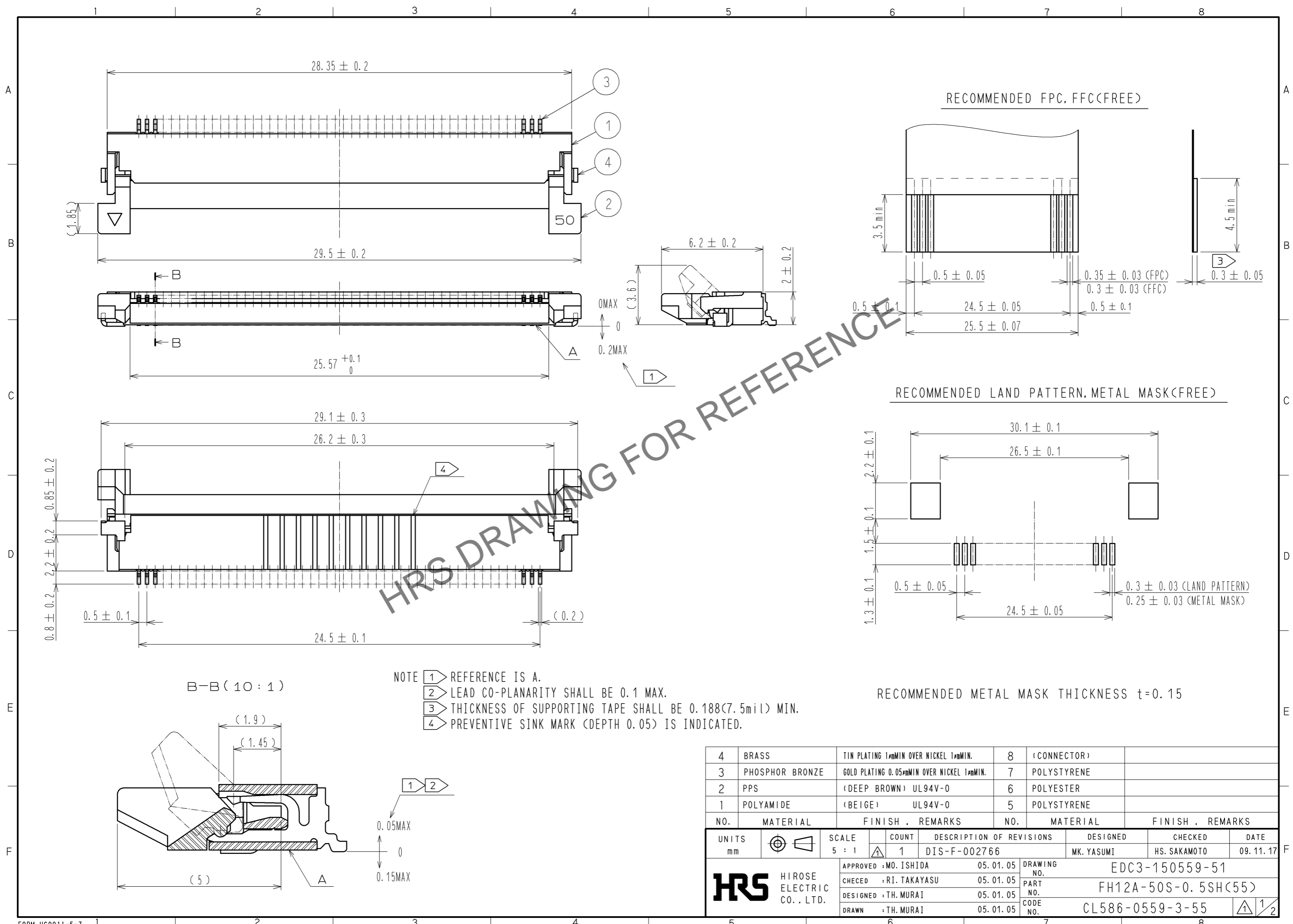


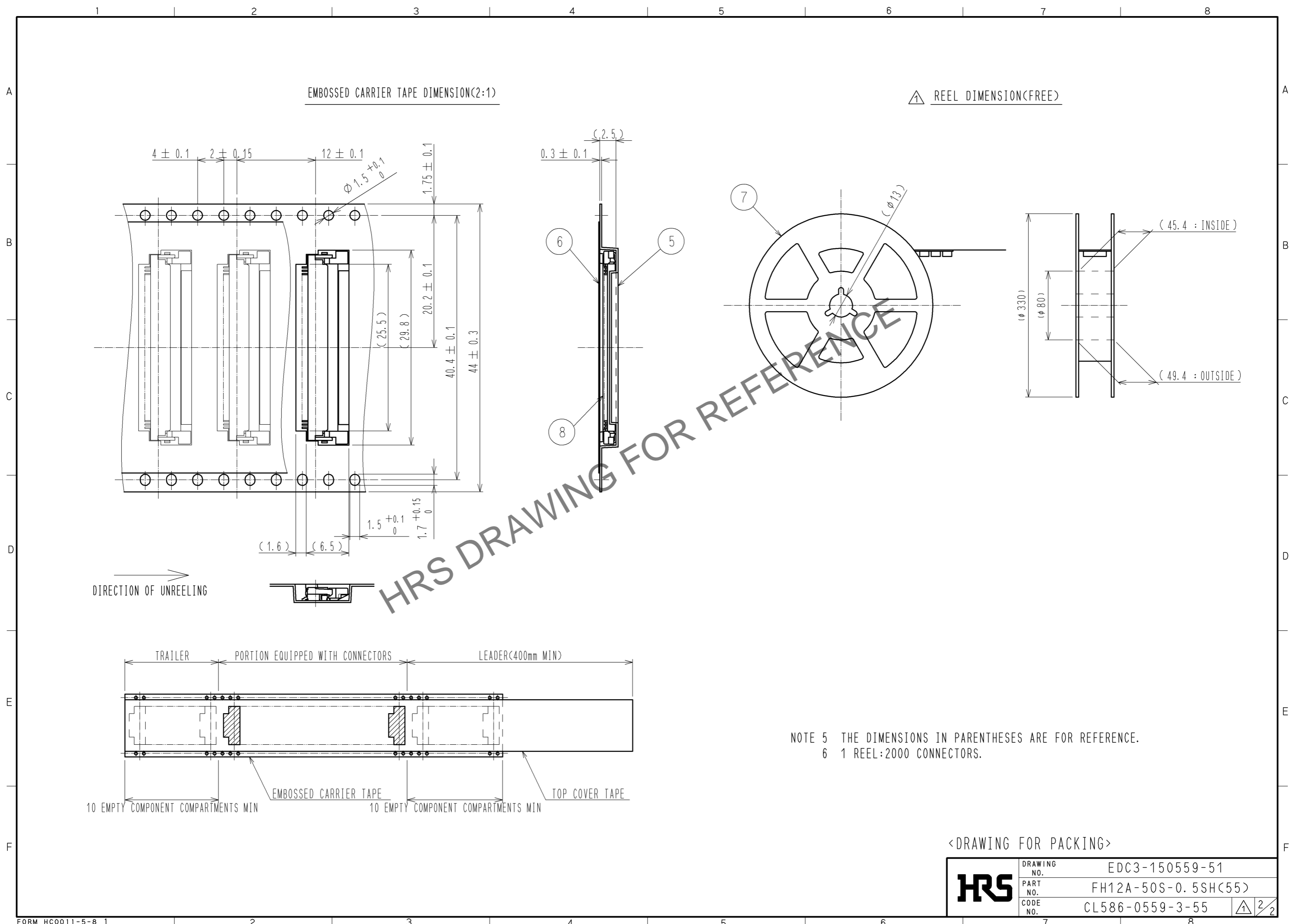
Sep.1.2024 Copyright 2024 HIROSE ELECTRIC CO., LTD. All Rights Reserved.
In case of consideration for using Automotive equipment / device which demand high reliability, kindly contact our sales window correspondents.



- NOTE
- ① REFERENCE IS A.
 - ② LEAD CO-PLANARITY SHALL BE 0.1 MAX.
 - ③ THICKNESS OF SUPPORTING TAPE SHALL BE 0.188(7.5mil) MIN.
 - ④ PREVENTIVE SINK MARK (DEPTH 0.05) IS INDICATED.

4	BRASS	TIN PLATING 1 μ mMIN OVER NICKEL 1 μ mMIN.	8	(CONNECTOR)			
3	PHOSPHOR BRONZE	GOLD PLATING 0.05 μ mMIN OVER NICKEL 1 μ mMIN.	7	POLYSTYRENE			
2	PPS	(DEEP BROWN) UL94V-0	6	POLYESTER			
1	POLYAMIDE	(BEIGE) UL94V-0	5	POLYSTYRENE			
NO.	MATERIAL	FINISH . REMARKS	NO.	MATERIAL	FINISH . REMARKS		
UNITS	mm	SCALE	COUNT	DESCRIPTION OF REVISIONS	DESIGNED	CHECKED	DATE
		5 : 1	1	DIS-F-002766	MK. YASUMI	HS. SAKAMOTO	09.11.17
APPROVED : MO. ISHIDA			05.01.05	DRAWING NO. EDC3-150559-51			
CHECKED : RI. TAKAYASU			05.01.05	PART NO. FH12A-50S-0.5SH(55)			
DESIGNED : TH. MURAI			05.01.05	CODE NO. CL586-0559-3-55			
DRAWN : TH. MURAI			05.01.05				

Sep.1.2024 Copyright 2024 HIROSE ELECTRIC CO., LTD. All Rights Reserved.
 In case of consideration for using Automotive equipment / device which demand high reliability, kindly contact our sales window correspondents.



HRS	DRAWING NO.	EDC3-150559-51
	PART NO.	FH12A-50S-0.5SH(55)
	CODE NO.	CL586-0559-3-55
		△ 2/2